

# Bonhams



New York Jewels

New York | May 1, 2019



# New York Jewels

New York | Wednesday May 1 2019, 2pm

## BONHAMS

580 Madison Avenue  
New York, New York 10022  
[bonhams.com](http://bonhams.com)

## PREVIEW

### Los Angeles

April 11, 2019, 12pm to 5pm  
April 12, 2019, 12pm to 5pm  
April 13, 2019, 12pm to 5pm  
April 14, 2019, 12pm to 3pm

### GENEVA – HIGHLIGHTS

April 23, 2019, 1:30pm to 6pm  
April 24, 2019, 8:30am to 3pm

### LONDON – HIGHLIGHTS

April 25, 2019, 9:30am to 4:30pm  
April 26, 2019, 9am to 2:30pm

## NEW YORK

April 27, 2019, 12pm to 5pm  
April 28, 2019, 12pm to 5pm  
April 29, 2019, 10am to 5pm  
April 30, 2019, 10am to 5pm

## SALE NUMBER:

25451

## CATALOG: \$35.00

## CUSTOMS DUTY

Customs Duty at the applicable rate and associated import fees are payable by the buyer on all lots marked with an omega symbol (Ω).

## BIDS

+1 (212) 644 9001  
+1 (212) 644 9009 fax  
[bids.us@bonhams.com](mailto:bids.us@bonhams.com)

To bid via the internet please visit [www.bonhams.com](http://www.bonhams.com)

## TELEPHONE BIDDING

Telephone bidding will only be accepted on a lot with a low estimate in excess of \$1000.

Please note that bids should be submitted no later than 24hrs prior to the sale. New Bidders must also provide proof of identity when submitting bids. Failure to do this may result in your bid not being processed.

## LIVE ONLINE BIDDING IS AVAILABLE FOR THIS SALE

Please email [bids.us@bonhams.com](mailto:bids.us@bonhams.com) with "Live bidding" in the subject line 48hrs before the auction to register for this service.

Please see pages 76 to 79 for bidder information including conditions of sale, after-sale collection and shipment.

## INQUIRIES

Jean Ghika  
Global Head of Jewelry  
[jean.ghika@bonhams.com](mailto:jean.ghika@bonhams.com)

## New York

+1 (212) 461 6526  
Brett O'Connor, Senior International Jewelry Director  
Caroline Morrissey, Head of sales, US Jewelry  
Camille Barbier, G.G.  
Catherine Roehre  
[Catherine.roehre@bonhams.com](mailto:Catherine.roehre@bonhams.com)

## Los Angeles

+1 (323) 436 5424  
Dana Ehrman, Director, LA Jewelry, G.G.  
Alexis Vourvoulis, G.G.  
Emily Waterfall

## San Francisco

+1 (415) 503 3306  
Shannon Beck, G.G., Senior Specialist  
[Shannon.beck@bonhams.com](mailto:Shannon.beck@bonhams.com)

## COLLECTION

Successful buyers with San Francisco and Los Angeles shipping addresses will have their purchases shipped to that office for pick-up. If you have a San Francisco or Los Angeles shipping address and do not want your purchase sent there for collection please notify us directly by Friday May 3, 2019. Purchases will be available for pick-up in San Francisco and Los Angeles on Wednesday 8 May, 2019.

## ILLUSTRATIONS

Front cover: lots 115 & 116  
Inside front cover: lot 2, 4 & 7  
Current page: lot 26  
Session page: lot 8  
Back cover: lot 27  
Inside back cover: lots 71, 86, 90 & 108

## REGISTRATION IMPORTANT NOTICE

Please note that all customers, irrespective of any previous activity with Bonhams, are required to complete the Bidder Registration Form in advance of the sale. The form can be found at the back of every catalogue and on our website at [www.bonhams.com](http://www.bonhams.com) and should be returned by email or post to the specialist department or to the bids department at [bids.us@bonhams.com](mailto:bids.us@bonhams.com)

To bid live online and / or leave internet bids please go to [www.bonhams.com/auctions/25451](http://www.bonhams.com/auctions/25451) and click on the Register to bid link at the top left of the page.



## Bonhams

© 2019, Bonhams & Butterfields Auctioneers Corp.; All rights reserved.  
Bond No. 57BSBGL0808  
Principal Auctioneer: Matthew Girling,  
License No. 1236798-DCA



## **INCLUDING PROPERTY FROM**

Property from the Collection of Nicole and William M. Keck II

Property from the Estate of Elesabeth Ingalls Gillet

Property from the Estate of an Oregon Lady

Property from a New York Estate

Property from a Honolulu Collector

Property of a Lady

Property from a Santa Barbara Collection

Property from a Santa Fe Collection



## INDEX

NAME	LOT NUMBER
Boucheron.....	37, 43 & 96
Buccellati.....	28 & 35
Bulgari.....	14, 73 & 88
Cartier.....	34, 45, 46, 47, 48, 49, 64 & 65
David Webb.....	3, 5, 6, 9, 10, 11, 12 & 13
Harry Winston.....	20, 69 & 92
JE Caldwell Co.....	60
Jean Schlumberger.....	1, 2, 4, 7 & 36
Kwiat.....	77
Marina B.....	21
Mauboussin.....	23
Michele Della Valle.....	87
Paloma Picasso.....	17
Piaget.....	114
Raymond Yard.....	95
René Boivin.....	26 & 27
Tiffany & Co.....	1, 2, 4, 7, 17, 33, 68 & 70
Van Cleef & Arpels.....	16, 19, 31, 44, 56, 66, 91 & 93
Verdura.....	8 & 39

## DIAMOND GRADING

### COLOR

GIA	CIBJO	UK TRADITIONAL
D	Exceptional White +	Finest White
E	Exceptional White	Finest White
F	Rare White +	Fine White
G	Rare White	Fine White
H	White	White
I	Slightly Tinted White	Commercial White
J	Slightly Tinted White	Top Silver Cape
K	Tinted White	Top Silver Cape
L	Tinted White	Silver Cape
M TO N	Tinted Color	Light Cape
O TO R	Tinted Color	Cape
R TO Z	Tinted Color	Dark Cape

### CLARITY

IF	Internally Flawless	No inclusions and only insignificant surface blemishes when viewed under 10X magnification
VVS1 - VVS2	Very Very Slightly Included	Minute inclusions that are incredibly difficult to see under 10X magnification, generally only visible from the back of the stone and may be removed easily by repolishing
VS1 - VS2	Very Slightly Included	Minor inclusions that range from difficult (VS1) to slightly easier (VS2) to see under 10X magnification
S11 - 2	Slightly Included	Noticeable inclusions that are easy (S11) or very easy (S12) to see under 10X magnification
I1 - 3	Obvious Inclusions	Obvious inclusions that are easily visible under 10X magnification and in some cases may even be seen without magnification

## RING SIZES

ENGLISH	METRIC	AMERICAN	FRENCH/JAPANESE
A	37.8252	½	-
A½	38.4237	¾	-
B	39.0222	1	-
B½	39.6207	1¼	-
C	40.2192	1½	-
C½	40.8177	1¾	-
D	41.4162	2	1
D½	42.0147	2¼	2
E	42.6132	2½	-
E½	43.2117	2¾	3
F	43.8102	3	4
F½	44.4087	3¼	-
G	45.0072	3½	5
G½	45.6057	3¾	-
H	46.2042	4	6
H½	46.8027	4¼	-
I	47.4012	4½	7
I½	47.9997	4¾	8
J	48.5982	5	-
J½	49.1967	5¼	9
K	49.7952	5½	10
K½	50.3937	5¾	-
L	50.9922	6	11
L½	51.5907	6¼	-
M	52.1892	6½	12
M½	52.7877	6¾	13
N	53.4860	7	-
N½	54.0844	7¼	14
O	54.6828	7½	15
O½	55.2812	7¾	-
P	55.8796	8	16
P½	56.4780	8¼	-
Q	57.0764	8½	17
Q½	57.6748	8¾	18
R	58.2732	9	-
R½	58.8716	9¼	19
S	59.4700	9½	20
S½	60.0684	9¾	-
T	60.6668	10	21
T½	61.2652	10¼	22
U	61.8636	10½	-
U½	62.4620	10¾	23
V	63.0604	11	24
V½	63.6588	11¼	-
W	64.2572	11½	25
W½	64.8556	11¾	-
X	65.4540	12	26
X½	66.0524	12¼	-
Y	66.6508	12½	-
Y½	67.2492	12¾	-
Z	67.8476	13	-



1

1  
**A PAIR OF 18K GOLD AND ENAMEL “DOT LOZENGE” EARCLIPS, JEAN SCHLUMBERGER FOR TIFFANY & CO.**  
of bombé form, applied with red enamel, further accented by raised lozenges and dot accents; *signed Tiffany & Co. Schlumberger*; length: 3/4in.

**\$2,000 - 3,000**



2

2  
**AN 18K GOLD, DIAMOND AND ENAMEL BRACELET, JEAN SCHLUMBERGER FOR TIFFANY & CO., FRENCH**  
of semi-flexible design, accented with bezel-set round brilliant-cut diamonds, applied with red enamel; *signed Tiffany & Co. Schlumberger, France*; accompanied by a signed box; estimated total diamond weight: 2.85 carats; circumference: 6 1/2in.

**\$12,000 - 18,000**





3

3  
**AN ENAMEL AND RUBY DRESS SET, DAVID WEBB**  
 cufflinks enhanced with blue enamel centers, to a roped motif border, interspersed with blue enamel and gold, the shirt studs of frog design, inlaid with blue enamel, accented by cabochon ruby eyes; *signed Webb; mounted in 18k gold; cufflink length: 1in.; shirt stud length: 1in.*

\$2,000 - 3,000



4

4  
**AN 18K GOLD, TURQUOISE AND ENAMEL BRACELET, JEAN SCHLUMBERGER FOR TIFFANY & CO., FRENCH**  
 of semi-flexible design, accented with bezel-set turquoise spheres, applied with gold enamel; *signed Tiffany & Co. Schlumberger, France; circumference: 6 1/2in.*

\$10,000 - 15,000



6



5

5

**A PAIR OF ENAMEL AND RUBY EARCLIPS, DAVID WEBB**

of frog design, the body applied with green enamel, accented by relief spirals, the eyes set with circular-shaped cabochon rubies; *signed Webb*; accompanied by a signed box; mounted in 18k gold; length: 1in.

\$4,000 - 6,000

6

**AN ENAMEL AND DIAMOND BRACELET, DAVID WEBB**

of highly flexible design, applied with green enamel, accented by round brilliant-cut diamond clusters; *signed Webb and David Webb*; mounted in platinum and 18k gold; length: 7in.

\$8,000 - 12,000



7

7  
**AN 18K GOLD AND ENAMEL BRACELET, JEAN SCHLUMBERGER FOR TIFFANY & CO., FRENCH**  
of semi-flexible design, set with three-dimensional gold accents, applied with blue enamel; *signed Tiffany & Co. Schlumberger, France; circumference: 7 1/4in.*

**\$18,000 - 25,000**



8

**PROPERTY FROM A HONOLULU COLLECTOR**

8  
**A PAIR OF 18K GOLD AND ENAMEL “NIGHT & DAY” CUFFLINKS, VERDURA**  
designed as globes depicting day and night, applied with dark blue and aqua enamel, one set with round brilliant-cut diamonds; *signed Verdura; accompanied by a signed box; length: 1 1/4in.*

**\$3,000 - 5,000**

Verdura originally designed the “Night & Day” cufflinks as a tribute to composer Cole Porter in 1939. The design has been highly collectable since its creation.



9

9  
**A PAIR OF ROCK CRYSTAL EARCLIPS, DAVID WEBB**  
each designed as rock crystal ropetwist hoops, accented by a yellow gold foliate border; *signed Webb*; accompanied by a signed box; mounted in 18k gold; length: 1 1/4in.

\$2,500 - 3,500



10

10  
**A ROCK CRYSTAL AND DIAMOND PENDANT, DAVID WEBB**  
centering a three-dimensional open-work oval-shaped rock crystal, loop enhanced by a round brilliant-cut diamond surmount; *signed Webb*; estimated total diamond weight: 3.75 carats; mounted in platinum and 18k white gold; length: 18 1/8in.

\$4,000 - 8,000

11



12



13



11  
**A DIAMOND RING, DAVID WEBB**  
of bombé twist design, pavé-set with round brilliant-cut diamonds; *signed Webb*; *estimated total diamond weight: 8.80 carats*; *mounted in platinum and 18k gold*; *size 5 1/2*  
**\$5,000 - 8,000**

12  
**A DIAMOND AND ENAMEL RING, DAVID WEBB**  
of bombé form, accented by round brilliant-cut diamonds, applied with black enamel; *signed Webb*; *estimated total diamond weight: 1.75 carats*; *mounted in 18k gold*; *size 3 1/2*  
**\$3,000 - 5,000**

13  
**A TURQUOISE AND DIAMOND RING, DAVID WEBB**  
centrally set with an oval-shaped cabochon turquoise, weighing approximately 31.40 carats, within an ornate setting of single-cut and round brilliant-cut diamonds; *signed Webb*; *estimated total diamond weight: 7.10 carats*; *mounted in platinum and 18k gold*; *size 4 1/2*  
**\$9,000 - 12,000**



14

14

**A COLLAR AND BRACELET “TUBOGAS” SET, BULGARI**

of highly flexible design; signed *Bulgari*, no.BA 402 and no.BA 5677; mounted in 18k gold; weighing approximately: 228.40 grams; collar length: 15in.; bracelet length: 6 7/8in.

**\$6,000 - 8,000**



15

15

**A PAIR OF DIAMOND EARRINGS**

of orbital design, with highly articulated links, set with round brilliant-cut diamonds; *estimated total diamond weight: 20.80 carats; mounted in 18k bi-colored gold; width: 1 1/2in. (colored diamonds untested for origin of color)*

**\$13,000 - 18,000**



16

16

**A DIAMOND BANGLE, VAN CLEEF & ARPELS, CIRCA 1970**

of open-work hinge-back design, pavé-set with single-cut and round brilliant-cut diamonds; *signed VCA, no.2K517; estimated total diamond weight: 3.60 carats; mounted in 14k gold; circumference: 6 1/4in.*

**\$12,000 - 18,000**



17

17  
**AN 18K GOLD AND DIAMOND COLLAR, PALOMA PICASSO FOR TIFFANY & CO., 1980**  
designed as three openwork rows of articulated links, centrally accented by round brilliant-cut diamonds; *signed T&Co., Paloma Picasso; length: 12 1/4in.*

**\$4,000 - 6,000**



18

**PROPERTY FROM A SANTA BARBARA COLLECTION**

18  
**A DIAMOND AND RUBY THREE-STONE RING**  
centering a cut-cornered rectangular-shaped modified brilliant-cut diamond, weighing 3.02 carats, flanked by rectangular-shaped rubies, weighing a total of approximately 2.45 carats; *mounted in platinum and 18k gold; size 6 3/4*

**\$20,000 - 30,000**

Accompanied by GIA report # 5191426549, dated June 22, 2018, stating the diamond as: G color, VS1 clarity.





19



20

19

**A DIAMOND RING, VAN CLEEF & ARPELS, FRENCH**

of raised navette form, set with round brilliant-cut diamonds, accented by tapered baguette-cut diamonds; *signed VCA, no.127600SA, with maker's mark and French assay mark; estimated total diamond weight: 5.75 carats; mounted in 18k gold; size 5 1/2*

**\$13,000 - 18,000**

20

**A RUBY AND DIAMOND NECKLACE, HARRY WINSTON**

of abstract openwork design, centrally set with circular-shaped cabochon rubies, accented by round brilliant-cut diamonds; *signed Winston, no.9205; estimated total diamond weight: 20.25 carats; mounted in 18k gold; length: 22in.*

**\$35,000 - 45,000**



21

21  
**AN 18K GOLD AND DIAMOND "ONDA" NECKLACE, MARINA B., CIRCA 1980**

of flexible scalloped design, accented with round brilliant-cut diamond details; *signed Marina B., no.F253, with maker's mark; estimated total diamond weight: 7.00 carats; circumference: 13 1/2in.*

**\$7,000 - 10,000**



22

22  
**A RUBY AND DIAMOND RING**

of crossover design, centrally set with a heart-shaped diamond, weighing approximately 1.20 carats, and a heart-shaped ruby, weighing approximately 1.15 carats, accented by square-shaped and round brilliant-cut diamonds; *mounted in 14k gold; size 4 3/4*

**\$8,000 - 12,000**

Accompanied by GIA report # 6204074818, dated February 19, 2019, stating the ruby as: Thai origin, no indications of heating.



23

**23 AN 18K GOLD AND DIAMOND BROOCH, MAUBOUSSIN, PARIS, CIRCA 1945**  
of abstract floral motif, accented throughout by single-cut and old European-cut diamonds; can be worn as two separate clips; *signed Mauboussin Paris, no.P3140, with maker's mark and French assay marks; estimated total diamond weight: 5.50 carats; length: 3 1/8in.*

**\$4,000 - 6,000**



24

**24 AN 18K GOLD AND CATS-EYE CHRYSOBERYL RING**  
centering an oval-shaped cabochon cats-eye chrysoberyl, weighing approximately 7.65 carats; *size 7*

**\$4,000 - 6,000**



25

**25 AN 18K GOLD, FANCY COLORED DIAMOND AND DIAMOND BRACELET**  
centering a cut-cornered rectangular-shaped modified brilliant-cut Fancy Yellow diamond, weighing 2.46 carats, flanked by square-shaped diamonds; *estimated remaining diamond weight: 2.25 carats; circumference: 7in.*

**\$6,000 - 8,000**

Accompanied by a copy of a GIA report # 8596599, dated May 20, 1995, stating the diamond as: Fancy Yellow color, VS1 clarity.

Accompanied by GIA report # 8596599, dated April 2, 2019, stating the diamond as: Fancy Yellow color, VS1 clarity.



26



27

26

**A LAPIS AND DIAMOND “DAUPHIN” BROOCH, RENÉ BOIVIN, FRENCH, 1948**

designed as two interlocking dolphins, set with lapis lazuli, accented by old mine-cut round brilliant-cut diamonds; *with workshop mark and French assay marks; mounted in 18k gold; length: 1 1/2in.*

**\$12,000 - 18,000**

Accompanied by a certificate of authenticity from Françoise Cailles, dated December 17, 2009.

A brooch of similar design illustrated in *Rene Boivin: Jeweller* by Françoise Cailles, p.282.

27

**A DIAMOND AND RUBY BROOCH, RENÉ BOIVIN, FRENCH, CIRCA 1950**

of floral motif, centering circular-shaped rubies, further enhanced by round brilliant-cut diamonds; *unsigned, with French assay marks; estimated total diamond weight: 5.85 carats; mounted in 18k gold; length: 1 7/8in.*

**\$12,000 - 18,000**

Accompanied by a certificate of authenticity from Françoise Cailles, dated June 27, 2018.

First opened in 1890, the French jewelry firm René Boivin was run by René and his wife Jeanne until 1917 when René passed away. Jeanne assumed full responsibility of Maison Boivin and broke tradition by hiring a handful of talented female jewelry designers including Suzanne Belperron and Juliette Moutard. By the 1930s Maison Boivin entered some of their most creative years and designed jewels that were bolder and more sculptural, inspired by nature and with a hint of femininity. Both brooches being sold here, lots 26 and 27, embody that spirit and accompany certificates of authenticity from Boivin expert Françoise Cailles. Mentioned in the certificate of authenticity, the ruby and diamond flower brooch was designed by Juliette Moutard who worked her entire career for Maison Boivin and was an important contributor to its success.





28



30



29

28  
**AN 18K BI-COLORED GOLD AND DIAMOND CUFF, BUCCELLATI**  
of textured hinged back design, accented by floral motifs set with round brilliant-cut diamonds; *signed M. Buccellati; accompanied by a signed box; estimated total diamond weight: 2.25 carats; circumference: 6 3/4in.*

**\$15,000 - 25,000**

29  
**A DIAMOND RING, CIRCA 1925**  
centering an old European-cut diamond, weighing approximately 2.30 carats, within an ornate single-cut diamond surround; *mounted in 14k white gold; size 5*

**\$8,000 - 12,000**

30  
**A DIAMOND RING, CIRCA 1945**  
of bombé form, pavé-set with old mine-cut diamonds; *estimated total diamond weight: 5.75 carats; mounted in 14k gold; size 4 3/4*

**\$6,000 - 9,000**



31

31  
**A TRIO OF 18K GOLD AND SAPPHIRE LEAF BROOCHES, VAN CLEEF & ARPELS, FRENCH**  
 each designed as a stylized leaf, accented by calibr -cut sapphires; *signed Van Cleef & Arpels, no.55478 no.59078, with French assay marks; lengths: 1 9/16in. and 1 5/8in.*

**\$16,000 - 22,000**



32

32  
**A DIAMOND RING**  
 of crossover design, centering two old mine-cut diamonds, weighing 2.56 and 2.50 carats, accented by single-cut diamonds; *mounted in platinum and 18k gold; size 6 1/4*

**\$15,000 - 20,000**



33

33  
**A SAPPHIRE AND DIAMOND STICK PIN, TIFFANY & CO.**  
 centering a cushion-shaped mixed-cut sapphire, weighing approximately 0.95 carat, within an old European-cut diamond surround; *signed Tiffany & Co.; accompanied by a fitted box; mounted in 14k gold; length: 3in.*

**\$6,000 - 10,000**

Accompanied by AGL report # CS 57950, dated November 12, 2013, stating the sapphire as: Kashmir origin, no indications of heat or clarity enhancement.



34

35

34  
**AN 18K GOLD AND DIAMOND BRACELET, CARTIER, FRENCH, CIRCA 1940**  
of flexible honeycomb design, accented with single-cut diamonds;  
*signed Cartier, France, no.22; estimated total diamond weight: 3.00*  
*carats; length: 7 1/4in.*

**\$4,000 - 6,000**

35  
**A PAIR OF DIAMOND EARRINGS, BUCCELLATI**  
of leaf motif, accented throughout with round brilliant-cut diamonds;  
*signed M. Buccellati, Italy; accompanied by a signed box; estimated*  
*total diamond weight: 1.95 carats; mounted in 18k bi-colored gold;*  
*length: 1 1/4in.*

**\$6,000 - 8,000**





36

36  
**A PERIDOT AND RUBY “PINEAPPLE” BROOCH, JEAN SCHLUMBERGER, PARIS, CIRCA 1960**  
of pineapple motif, set with circular-shaped peridots, accented by cabochon rubies, to texture gold leaves; *signed Schlumberger Paris; with maker’s mark and French assay marks; mounted in 18k gold; length: 2 1/4in.*

**\$9,000 - 12,000**



37

37  
**AN AQUAMARINE AND DIAMOND BROOCH, BOUCHERON, PARIS, CIRCA 1940**  
of floral design, centering an openwork cluster of rectangular-shaped aquamarines, accented by single and round brilliant-cut diamonds; *signed Boucheron Paris, with workshop marks; mounted in 18k bi-colored gold; width: 2 1/2in.*

**\$7,000 - 10,000**



38

38  
**A TRIO OF SPINEL, SAPPHIRE AND DIAMOND RINGS**  
each designed as a graduated row of cushion-shaped sapphires,  
spinel and old European-cut diamonds; *estimated total diamond*  
*weight: 1.45 carats; mounted in 18k gold; size 6 1/4*  
**\$3,000 - 5,000**



39

39  
**A 14K GOLD NECKLACE, VERDURA**  
of roped double link design; *signed Verdura; length: 15 1/4in.*  
**\$15,000 - 20,000**



40



41

40

**AN 18K TRI-COLORED GOLD AND DIAMOND RING**

centering an old European-cut diamond, weighing approximately 4.20 carats; size 4

**\$20,000 - 30,000**

41

**A JADEITE JADE AND DIAMOND NECKLACE**

designed as a single strand of graduated jadeite jade beads, measuring approximately 8.1 to 11.5mm, accented by a pavé-set diamond clasp; mounted in 18k white gold; length: 20 1/7in.

**\$6,000 - 10,000**

Accompanied by Mason-Kay report # 190327-8912, dated March 27, 2019, stating the jade as: Natural Jadeite Jade, no dye or polymer detected - 'A' Jade.



42



43

42

**AN EMERALD AND DIAMOND PENDANT**

centrally set with a pear-shaped modified brilliant-cut emerald, weighing 30.00 carats, framed by a graduated row of round brilliant-cut diamonds, topped by marquise-shaped and round brilliant-cut diamonds; *estimated total diamond weight: 1.50 carats; mounted in 18k gold; length: 18in.*

**\$120,000 - 150,000**

Accompanied by Gubelin report # 18082082, dated September 19, 2018, stating the emerald as: Colombian origin, indications of minor clarity enhancement.

43

**AN 18K GOLD, DIAMOND AND GEM-SET BRACELET, BOUCHERON, PARIS, CIRCA 1950**

of highly flexible design, accented throughout with sapphires, diamonds, rubies and emeralds; *signed Boucheron Paris, no.57857; length: 8 5/8in.*

**\$8,000 - 12,000**



44

44

**A RUBY, SAPPHIRE AND DIAMOND BROOCH, VAN CLEEF & ARPELS, NEW YORK**

designed as a bouquet, the flowerheads set with round brilliant-cut diamonds, with circular-shaped ruby and sapphire petals; *signed Van Cleef & Arpels NY, no.29865, with maker's mark; estimated total diamond weight: 1.20 carats; mounted in 18k gold; length: 3 1/4in.*

**\$9,000 - 12,000**



45

45

**AN EMERALD AND DIAMOND RING, CARTIER**

centering a square-shaped emerald-cut emerald, weighing 5.02 carats, accented by round brilliant-cut diamonds; *signed Cartier, no.40720; accompanied by a signed box; estimated total diamond weight: 1.20 carats; mounted in 18k gold; size 4 3/4*

**\$150,000 - 200,000**

Accompanied by AGL report # 1094964, dated August 29, 2018, stating the emerald as: Classic Colombian origin, indications of insignificant, traditional, enhancement.

Accompanied by AGL book for report # 1094964.



46

46  
**AN AGATE, SAPPHIRE AND DIAMOND DESK CLOCK, CARTIER, FRENCH, CIRCA 1920**

the circular dial, applied with Arabic numerals and rose-cut diamond set hands, to a decorative white enamel bezel, set within an agate frame, accented by circular-shaped cabochon sapphires; *signed Cartier, no.55293, with French assay mark; width: 3 1/4in.*

**\$12,000 - 18,000**



47

47  
**AN ENAMEL AND DIAMOND DESK CLOCK, CARTIER, CIRCA 1910**

the circular dial with Roman numeral indicators, with rose-cut diamond hands, the dial and bezel applied with pink enamel; *signed Cartier; width: 3 1/4in.*

**\$2,000 - 3,000**



48

48  
**AN ONYX AND NEPHRITE JADE DESK CLOCK, CARTIER,  
 CIRCA 1925**

the circular dial of luminous and black minute indicators, within a round crystalline frame, set with Arabic numerals, to a black onyx case, accented by circular-shaped nephrite jade; *signed Cartier, no.864; crystal deficient; length: 3 1/4in.*

**\$2,000 - 4,000**



49

49  
**AN AGATE, SAPPHIRE AND DIAMOND DESK CLOCK, CARTIER,  
 CIRCA 1920**

the circular dial applied with Roman numerals, with single-cut diamond hands, to a decorative enamel bezel, set within a carved agate frame, accented by circular-shaped cabochon sapphires; *signed Cartier, no.4377; length: 3in.*

**\$10,000 - 15,000**



51



52



50

**PROPERTY FROM A NEW YORK ESTATE**

**51  
A NATURAL PEARL AND DIAMOND  
NECKLACE, CIRCA 1910**

centrally set with a semi-baroque natural pearl, measuring approximately 12.5 x 11.1 x 10.6mm, accented by a rose-cut diamond cap, to an articulated line of old European-cut diamonds, suspended from a central row of similarly cut diamonds; *estimated total diamond weight: 2.40 carats; mounted in platinum; length: 18 5/8in.*

**\$15,000 - 20,000**

Accompanied by GIA report # 14449679, dated August 25, 2005, stating the pearl as: Natural.

**PROPERTY FROM A SANTA FE  
COLLECTION**

**52  
A DIAMOND BROOCH, CIRCA 1915**  
centering an old European-cut diamond, weighing approximately 2.80 carats, within an openwork surround, set with old mine and old European-cut diamonds; *estimated remaining diamond weight: 1.20 carats; mounted in platinum; length: 2 9/16in.*

**\$15,000 - 20,000**

**50  
A RUBY AND DIAMOND BRACELET,  
CIRCA 1925**  
of articulated design, composed of openwork geometric links set with old European-cut and round brilliant-cut diamonds, centrally set with oval-shaped rubies, accented by calibré-cut rubies; *estimated total diamond weight: 2.85 carats; mounted in platinum; length: 7in.*

**\$5,000 - 7,000**





53



54



(alternative view)

53

**A RUBY AND DIAMOND RING, CIRCA 1890**

centering an oval-shaped ruby, weighing approximately 1.45 carats, framed by old European-cut diamonds; *estimated total diamond weight: 2.80 carats; mounted in 18k white gold; size 5 3/4*

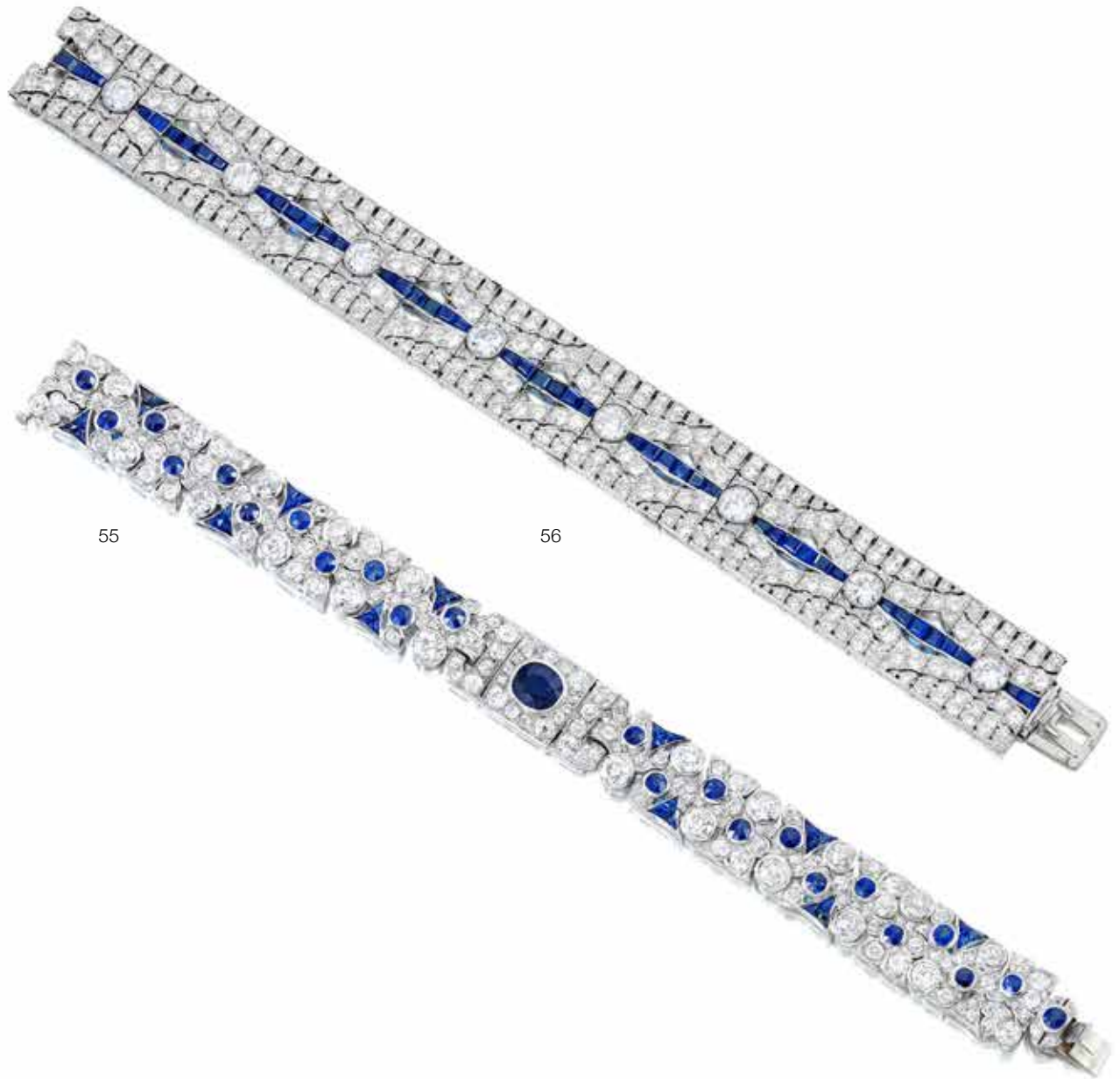
**\$15,000 - 20,000**

54

**A DIAMOND BROOCH**

of floral motif, centering three flower-heads set with old European-cut diamonds, accented throughout with single-cut and round brilliant-cut diamonds, the pin head set with a circular-shaped cabochon ruby; *with Russian assay marks; accompanied by fittings to convert into ring and earrings; estimated total diamond weight: 19.00 carats; mounted in silver-topped 14k gold; length: 2 3/4in.*

**\$9,000 - 12,000**



55

56

**PROPERTY FROM A NEW YORK ESTATE**

55

**A SAPPHIRE AND DIAMOND BRACELET, CIRCA 1925**

centering a cushion-shaped sapphire, weighing approximately 1.25 carats, within an old European-cut diamond surround, the band of articulated abstract design, accented with single-cut and old European-cut diamonds, circular-shaped and calibré-cut sapphires; with maker's mark and French assay mark; estimated total diamond weight: 10.90 carats; mounted in platinum; length: 7 5/16in.

**\$4,000 - 7,000**

56

**A SAPPHIRE AND DIAMOND BRACELET, VAN CLEEF & ARPELS, PARIS, CIRCA 1920**

of open work design, centrally set with a row of calibré-cut sapphires, interspersed with old European-cut diamonds, to ornate paneling set with similarly cut diamonds; signed *Van Cleef et Arpels Paris*, no.22041, with French assay marks; estimated total diamond weight: 9.20 carats; mounted in platinum; length: 7 1/4in.

**\$30,000 - 50,000**



57



58

57

**A NATURAL PEARL AND DIAMOND NECKLACE**

designed as a graduated double strand of one hundred and twenty-two natural pearls, measuring approximately 3.8 to 7.7mm, enhanced by an old mine-cut diamond, weighing approximately 0.85 carat, within a calibré-cut sapphire clasp; *mounted in platinum; length: 13in.*

**\$7,000 - 10,000**

Accompanied by GIA report # 6204074358, dated March 6, 2019, stating the pearls as: Natural, Saltwater, no indications of treatment.

58

**A SAPPHIRE BAND**

designed as an eternity band, set with rectangular-shaped sapphires; *mounted in 18k white gold; size 5 3/4*

**\$4,000 - 7,000**



59

59  
**A DIAMOND AND SAPPHIRE RING,  
 CIRCA 1925**

centrally set with three old European-cut diamonds, weighing approximately 0.65, 0.85 and 1.30 carats, within an ornate setting of single-cut diamonds, accented by calibré-cut sapphires; mounted in platinum; size 8 1/2

**\$6,000 - 9,000**

60

60  
**AN AQUAMARINE AND DIAMOND  
 BRACELET, J.E. CALDWELL & CO.**

designed as an articulated line of alternating pear-shaped diamonds and cushion-shaped aquamarines, accented by round brilliant-cut diamonds; signed *JEC&Co.*, no.P8343; estimated total diamond weight: 5.50 carats; mounted in platinum; length: 7 1/4in.

**\$6,000 - 10,000**

Accompanied by nine GIA reports. Please contact department for information.

61

61  
**AN AQUAMARINE AND DIAMOND CLIP  
 OF SCROLL DESIGN**

centering a rectangular-shaped aquamarine, weighing approximately 30.35 carats, accented by rectangular-shaped, tapered baguette-cut and round brilliant-cut diamonds; mounting signed *Cartier MTG*, no.54-54-717; estimated total diamond weight: 4.40 carats; mounted in platinum; length: 1 3/4in.

**\$7,500 - 9,500**



62

62  
**A NATURAL PEARL AND DIAMOND  
PENDANT, CIRCA 1895**

of delicate design, suspending a pear-shaped natural pearl drop, measuring approximately 8.3 x 7.9mm, to a centrally set button-shaped pearl, within an old European-cut diamond surround, flanked by similarly cut diamonds, topped by a button-shaped pearl; accompanied by a fitted box; mounted in platinum-topped 14k gold; length: 2 5/8in.

**\$4,000 - 7,000**

Accompanied by GIA report # 5182184078, dated February 22, 2017, stating the pearl as: Natural, Saltwater, no indications of treatment.



64

64  
**A DIAMOND AND ENAMEL WRISTWATCH,  
CARTIER, FRENCH, CIRCA 1925**

manual winding, the rectangular-shaped dial with black Arabic numerals, flanked by rose-cut diamonds, to a roped strap and black enamel deployant clasp dial signed Cartier, no.22833, 30139, 2718, with French assay marks; mounted in platinum and 18k gold; circumference: 6in.

**\$8,000 - 12,000**



63

63  
**A DIAMOND BRACELET, CIRCA 1930**

designed with articulated trapezoid-shaped panels, set with baguette-cut, single-cut and round brilliant-cut diamonds; estimated total diamond weight: 11.20 carats; mounted in platinum; length: 7in.

**\$15,000 - 20,000**



65

65  
**A TURQUOISE, GREEN STONE, LAPIS LAZULI AND DIAMOND BRACELET, CARTIER, CIRCA 1925**

composed of four rows of turquoise and green stone beads, measuring approximately 5.1 to 6.0mm, accented by a carved lapis lazuli clasp, accented by single-cut diamonds; *signed Cartier, no.7137; mounted in platinum; length: 8in.*

**\$6,000 - 8,000**



66

66  
**A DIAMOND AND EMERALD BROOCH, VAN CLEEF & ARPELS, CIRCA 1930**

of abstract design, set throughout with baguette-shaped, old European-cut and round brilliant-cut diamonds, enhanced by a square-shaped emerald-cut emerald, weighing approximately 0.85 carat; *signed Van Cleef & Arpels, no.19313; estimated total diamond weight: 5.80 carats; mounted in platinum; length: 2 1/8in.*

**\$25,000 - 35,000**

Accompanied by AGL report # 1084161, dated May 16, 2017, stating the emerald as: Colombian origin, no indications of heat or clarity enhancement.



67

68

67

**A DIAMOND BRACELET, FRENCH, CIRCA 1925**

designed as articulated openwork panels, set throughout with old European-cut diamonds; *with maker's mark and French assay marks; estimated total diamond weight: 20.50 carats; mounted in platinum; length: 7 3/16in.*

**\$12,000 - 18,000**

68

**AN EMERALD AND DIAMOND BRACELET, TIFFANY & CO., CIRCA 1925**

articulated openwork links, set with marquise-shaped, french-cut and old European-cut diamonds, accented by square-shaped emeralds; *signed Tiffany & Co.; estimated total diamond weight: 12.00 carats; mounted in platinum; length: 6 3/8in.*

**\$30,000 - 50,000**



69

**A SAPPHIRE AND DIAMOND BRACELET, HARRY WINSTON**

of foliate design, centrally set with oval-shaped mixed-cut sapphires, framed by marquise-shaped and round brilliant-cut diamonds; *signed Winston, no.S3036, with French assay marks; estimated total diamond weight: 33.05 carats; mounted in 18k gold; length: 7 1/4in.*

**\$120,000 - 150,000**

Accompanied by AGL report # 1081156, dated January 18, 2017, stating the sapphires no. 1-5 and 7-9 as: Thai origin, and no.6 as: Ceylon (Sri Lanka) origin, no indications of heat or clarity enhancement.





70



70

**AN EMERALD AND DIAMOND RING, TIFFANY & CO.**

centering a square-shaped emerald-cut emerald, weighing 2.12 carats, framed by a double row of round brilliant-cut diamonds; *signed Tiffany & Co.; mounted in platinum and 18k gold; size 5 3/4*

**\$6,000 - 10,000**

Accompanied by AGL report # 1093071, dated June 13, 2018, stating the emerald as: Colombian origin, indications of minor, modern, clarity enhancement.

71



71

**A DIAMOND RING**

centering a round brilliant-cut diamond, weighing 3.87 carats, flanked by tapered baguette-cut diamonds; *mounted in platinum; size 4 3/4*

**\$35,000 - 55,000**

Accompanied by GIA report # 1196817756, dated November 12, 2018, stating the diamond as: E color, SI1 clarity.

72



72

**A COLORED SAPPHIRE AND DIAMOND RING**

centering an oval-shaped modified brilliant step-cut pink sapphire, weighing 10.11 carats, flanked by oval-shaped diamonds, within a round brilliant-cut diamond surround, to a similarly cut diamond split-shank; *estimated total diamond weight: 2.00 carats; mounted in platinum; size 6 3/4*

**\$45,000 - 65,000**

Accompanied by SSEF report # 98145, dated March 7, 2018, stating the pink sapphire as: Madagascan origin, no indications of heating.

73



73

**A SAPPHIRE AND DIAMOND RING, BVLGARI**

centering an oval-shaped mixed-cut sapphire, weighing 3.40 carats, accented by baguette and round brilliant-cut diamonds; *signed Bvlgari; estimated total diamond weight: 1.40 carats; mounted in platinum; size 5 1/2*

**\$20,000 - 30,000**

Accompanied by AGL report # CS 44443, dated April 25, 2011, stating the sapphire as: no indications of heat or clarity enhancement.



74

75

74

**AN AMETHYST, MOONSTONE AND DIAMOND BRACELET**

of highly flexible design, set with circular-shaped cabochon amethyst and moonstone, accented by round brilliant-cut diamonds; *estimated total diamond weight: 4.65 carats; mounted in 18k white gold; length: 7 1/4in.*

**\$10,000 - 15,000**

75

**A SPINEL AND DIAMOND RING**

of bombé form, centrally set with a cushion-shaped mixed-cut spinel, weighing 12.69 carats, accented by round brilliant-cut diamonds; *estimated total diamond weight: 6.00 carats; mounted in 18k white gold; size 9*

**\$35,000 - 55,000**

Accompanied by AGL report # 1091539, dated April 9, 2018, stating the spinel as: Tanzanian origin, no indications of heat or clarity enhancement.



76

76

**A PAIR OF DIAMOND PENDANT EARRINGS**

the surmounts centrally set with baguette-cut diamonds, within a round brilliant-cut diamond frame, suspending an openwork oval-shaped pendant, of similar design; *estimated total diamond weight: 9.50 carats; mounted in 18k white gold; length: 2 11/16in.*

**\$9,000 - 12,000**



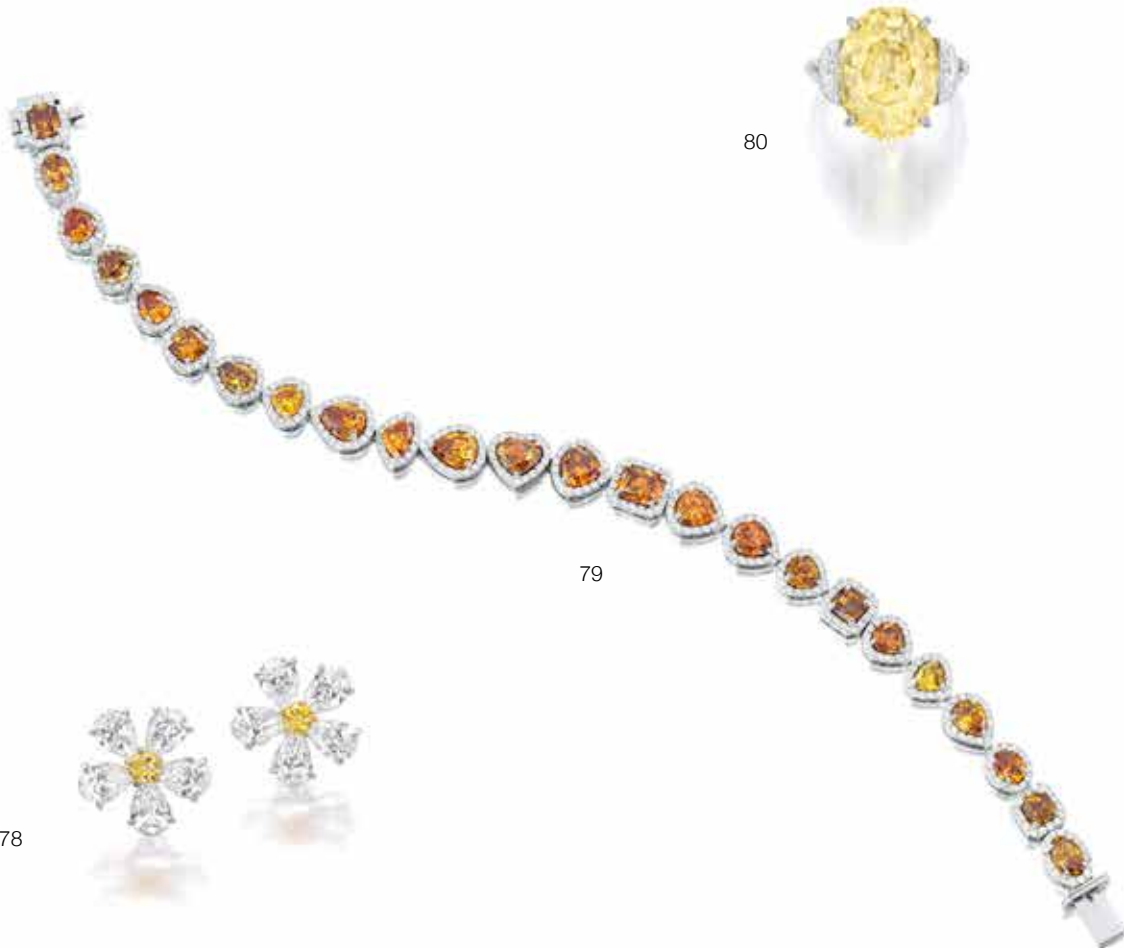
77

77

**A DIAMOND WRISTWATCH, KWIAT**

quartz movement, round brilliant-cut diamond dial, within a frame of similarly cut diamonds, flexible bracelet centrally set with baguette-cut diamonds, flanked by round brilliant-cut diamonds; *signed Kwiat, no.26705; estimated total diamond weight: 14.85 carats; mounted in platinum; circumference: 6 1/8in.*

**\$8,000 - 12,000**



78

79

80

**78**  
**A PAIR OF FANCY COLORED DIAMOND AND DIAMOND EARRINGS**  
 of floral motif, centrally set with round brilliant-cut Fancy Vivid Yellow diamonds, framed by pear-shaped diamonds; *total diamond weight: 5.57 carats; mounted in 18k white gold; width: 1/2in.*

**\$18,000 - 28,000**

Accompanied by twelve GIA certificates. Please contact jewelry department for information.

**79**  
**A COLORED DIAMOND AND DIAMOND BRACELET**  
 centrally set with fancy-shaped fancy colored diamonds, within a round brilliant-cut pavé-set surround; *estimated total diamond weight: 14.65 carats; mounted in 18k white gold; length: 7 3/8in.*

**\$15,000 - 20,000**

Please note that 12 out of 24 of the colored diamonds are accompanied by GIA reports. Please contact jewelry department for further information.

**80**  
**A COLORED SAPPHIRE AND DIAMOND RING**  
 centering an oval-shaped mixed-cut yellow sapphire, weighing 15.35 carats, flanked by half-moon-shaped diamonds; *total diamond weight: 1.58 carats; mounted in platinum; size 6*

**\$12,000 - 18,000**

Accompanied by AGL report # CS 49378, dated April 23, 2012, stating the sapphire as: Ceylon (Sri Lanka) origin, no indications of heat or clarity enhancement.



81



82

81

**A COLORED DIAMOND AND DIAMOND NECKLACE AND EARRING SET**

designed as a flexible row of fancy colored heart-shaped diamonds, suspending a line of similarly cut diamonds, interspersed with round brilliant-cut diamonds, earrings of similar design; *estimated total diamond weight: 30.40 carats; mounted in platinum; necklace length: 15 1/2in.; earring length: 1 3/4in.*

**\$20,000 - 30,000**

Accompanied by GIA report # 2205161423, dated April 2, 2019, stating the 1.04 carat diamond as: Fancy Gray color, I2 clarity.

Accompanied by GIA report # 6204161426, dated April 1, 2019, stating the 0.60 carat diamond as: Fancy Deep Yellow Orange color, I2 clarity.

Accompanied by GIA report # 5201161489, dated March 29, 2019, stating the 0.38 carat diamond as: Fancy Brownish Pink color, I2 clarity.

82

**A DIAMOND RING**

centering a round brilliant-cut diamond, weighing 2.01 carats; *mounted in 14k white gold; size 7 1/4*

**\$12,000 - 18,000**

Accompanied by GIA report # 5176128231, dated March 28, 2014, stating the diamond as: D color, SI1 clarity.

83



84



83

**A DIAMOND RING AND DIAMOND BAND**

centering an emerald-cut diamond, weighing 3.02 carats, flanked by similarly cut diamonds, with a baguette and round brilliant-cut diamond band; *estimated remaining diamond weight: 3.70 carats; mounted in platinum; size 5 1/4*

**\$20,000 - 30,000**

Accompanied by GIA report # 6207011246, dated January 28, 2019, stating the diamond as: I color, VS2 clarity.

84

**A PAIR OF DIAMOND BANGLES**

pavé-set with round brilliant-cut diamonds; *estimated total diamond weight: 45.35 carats; mounted in 18k white and rose gold; circumference: 6 3/4in.*

**\$32,000 - 52,000**





85

85

**A PAIR OF DIAMOND EARRINGS**

set with pear-shaped diamond surmounts, framed by round brilliant-cut diamonds, to an articulated link chain of similarly cut diamonds, suspending pear-shaped brilliant-cut diamonds, weighing 1.57 and 1.56 carats, within an openwork double frame; *estimated remaining diamond weight: 5.10 carats; mounted in platinum; length: 2 1/4in.*

**\$20,000 - 30,000**

Accompanied by GIA report # 13181064, dated March 2, 2004, stating the 1.57 carats diamond as: G color, SI2 clarity.

Accompanied by GIA report # 16136498, dated June 14, 2007, stating the 1.56 carats diamond as: G color, VS1 clarity.



86

**PROPERTY FROM THE COLLECTION OF NICOLE AND WILLIAM M. KECK II**

86

**A DIAMOND RING, FRED, FRENCH**

centering a cut-cornered rectangular-shaped modified brilliant-cut diamond, weighing 5.18 carats, flanked by triangular-shaped diamonds; *signed Fred, accompanied by signed pouch; with French assay mark; estimated remaining diamond weight: 1.00 carat; mounted in platinum; size 5*

**\$130,000 - 180,000**

Accompanied by GIA report # 5374385, dated February 14, 2019, stating the diamond as: D color, VVS1 clarity.



87

**A PAIR OF RUBY AND DIAMOND PENDANT EARRINGS,  
MICHELE DELLA VALLE**

the surmounts centrally set with a cluster of fancy-shaped rubies, framed by pear-shaped and round brilliant-cut diamonds, suspending a drop-shaped pendant of similarly design; signed *Michele Della Valle*, no. 11894; estimated total diamond weight: 4.25 carats; mounted in 18k rose gold; length: 3 1/4in.

**\$28,000 - 38,000**



88



88

**AN EMERALD AND DIAMOND RING, BULGARI**

centrally set with two circular-shaped cabochon emeralds, weighing approximately 3.15 and 3.25 carats, accented by baguette-cut diamonds; *signed Bvlgari; estimated total diamond weight: 1.20 carats; mounted in platinum; size 5 3/4*

**\$18,000 - 25,000**

89



89

**A DIAMOND RING**

centering an emerald-cut diamond, weighing 5.35 carats, flanked by tapered baguette-cut diamonds; *mounted in platinum; size 6 1/4*

**\$40,000 - 60,000**

Accompanied by GIA report # 6207160715, dated March 20, 2019, stating the diamond as: J color, VS1 clarity.

90



90

**A RUBY AND DIAMOND RING**

centering an octagonal-shaped step-cut ruby, weighing approximately 3.30 carats, flanked by baguette-cut diamonds; *mounted in 18k white gold; size 5 3/4*

**\$45,000 - 65,000**

Accompanied by Gubelin report # 18120174, dated January 17, 2019, stating the ruby as: Burmese (Myanmar) origin, no indications of heating.



91

91  
**A PAIR OF DIAMOND “MAGIC ALHAMBRA” EARRINGS, VAN CLEEF & ARPELS, FRENCH**  
each comprised of three quatrefoils of various sizes, set with round brilliant-cut diamonds, connected by trace-link chains; *signed VCA, no. JB190649, with maker's mark and French assay mark; estimated total diamond weight: 4.25 carats; mounted in 18k white gold; length: 2 1/2in.*

**\$26,000 - 32,000**



92

92  
**A TURQUOISE, RUBY, EMERALD, AND DIAMOND BROOCH, HARRY WINSTON**  
of abstract spray design, centering six cabochon turquoise, accented by fancy-shaped emeralds and rubies, enhanced by marquise-shaped and round brilliant-cut diamonds; *unsigned; estimated total diamond weight: 5.75 carats; mounted in platinum and 18k gold; width: 1 7/8in.*

**\$15,000 - 20,000**

93



94



93

**AN EMERALD AND DIAMOND RING, VAN CLEEF & ARPELS**

centering an oval-shaped mixed-cut emerald, weighing 3.19 carats, flanked by oval-shaped diamonds; *signed Van Cleef & Arpels, no. CS0 6501; accompanied by a signed box; mounted in platinum; size 4 3/4*

**\$75,000 - 100,000**

Accompanied by AGL report # 1094412, dated August 28, 2018, stating the emerald as: Classic Colombian origin, indications of insignificant to minor, traditional, enhancement.

Accompanied by AGL book for report # 1094412.

94

**A PAIR OF DIAMOND EARRINGS**

of cluster design, set throughout with marquise-shaped and heart-shaped diamonds; *estimated total diamond weight: 5.80 carats; mounted in platinum; length: 1 1/16in.*

**\$5,000 - 10,000**



95

95  
**A SAPPHIRE, DIAMOND, EMERALD AND RUBY BROOCH, RAYMOND YARD, CIRCA 1955**

designed as a perched bird, centrally set with a circular-shaped sapphire, weighing approximately 4.70 carats, framed by similarly cut sapphires, set throughout with baguette, single-cut and old European-cut diamonds, accented with calibr -cut emeralds and sapphires, to a circular-shaped ruby eye; *signed Yard*; *estimated total diamond weight: 3.50 carats*; *mounted in platinum and yellow gold*; *length: 2 3/4in.*

**\$4,000 - 6,000**

Accompanied by GIA report # 6204172115, dated March 29, 2019, stating the sapphire has: no indications of heat or clarity enhancement.



96

96  
**A DIAMOND, COLORED DIAMOND, SAPPHIRE AND TSAVORITE "BILADOM" RING, BOUCHERON**

of panda design, pav -set with round brilliant-cut diamonds and colored diamonds, the panda holding a cabochon sapphire, weighing approximately 3.20 carats, accented by circular-shaped tsavorite; *signed Boucheron, no.N64760, with maker's mark and Swiss assay mark*; *accompanied by a signed box*; *estimated total diamond weight: 1.65 carats*; *mounted in 18k white gold*; *size 5 3/4*

**\$8,000 - 10,000**

Accompanied by a booklet of authenticity from Boucheron, dated August 1, 2013.



97

**A DIAMOND BRACELET**

of openwork link design, pavé-set with round brilliant-cut diamonds;  
*estimated total diamond weight: 85.65 carats; mounted in 18k white  
gold; length: 7 1/4in.*

**\$65,000 - 95,000**







98

99

98

**A DIAMOND AND SAPPHIRE BRACELET, FRENCH**

of garland design, set with intertwined rows of marquis-shaped diamonds and sapphires; with workshop marks and French assay marks; estimated total diamond weight: 11.20 carats; mounted in platinum and 18k white gold; length: 7 1/4in.

**\$7,000 - 10,000**

99

**A SAPPHIRE AND DIAMOND RING**

of crossover design, centrally set with a pear-shaped mixed-cut sapphire, weighing 4.71 carats, and a pear-shaped brilliant-cut diamond, weighing 2.23 carats, flanked by baguette-cut diamonds; mounted in platinum; size 7 1/4

**\$15,000 - 20,000**

Accompanied by AGL report # 1096958, dated November 26, 2018, stating the sapphire as: Ceylon (Sri Lanka) origin, no indications of heat or clarity enhancement.

Accompanied by GIA report # 5192831154, dated November 9, 2018, stating the diamond as: G color, VS1 clarity.



100

100

**A PAIR OF DIAMOND EARRINGS**

of chandelier design, set throughout with marquise-shaped, pear-shaped and round brilliant-cut diamonds; *estimated total diamond weight: 15.65 carats; mounted in platinum; length: 2 3/4in.*

**\$20,000 - 30,000**

Accompanied by eight GIA reports. Please contact department for information.



101

101

**A SAPPHIRE AND DIAMOND RING**

centering an oval-shaped modified brilliant step-cut sapphire, weighing 10.20 carats, accented by baguette and round brilliant-cut diamonds; *estimated total diamond weight: 1.65 carats; mounted in platinum; size 5 3/4*

**\$45,000 - 65,000**

Accompanied by GRS report # 2016-129614, dated December 13, 2016, stating the sapphire as: Sri Lankan origin, no indications of thermal treatment.



103



102

102

**A DIAMOND BRACELET**

designed as an articulate line of graduated rectangular-shaped diamonds; *estimated total diamond weight: 25.20 carats; mounted in platinum; length: 6 3/4in.*

**\$30,000 - 50,000**

103

**A FINE FANCY COLORED DIAMOND AND DIAMOND RING**

centering a square-shaped modified brilliant-cut Fancy Intense Yellow diamond, weighing 9.22 carats, flanked by trapezoid-shaped diamonds; *estimated remaining diamond weight: 1.45 carats; mounted in 18k white gold; size 7 1/2*

**\$200,000 - 300,000**

Accompanied by GIA report # 13921940, dated September 5, 2014, stating the 9.22 carats diamond as: Fancy Intense Yellow color, Internally Flawless clarity.



104



105

**PROPERTY OF A LADY**

104

**A DIAMOND NECKLACE**

featuring seventy-one round brilliant cut diamonds; *estimated total diamond weight: 50.00 carats; mounted in 18k white gold; length: 18in.*

**\$50,000 - 70,000**

105

**A PAIR OF DIAMOND EARCLIPS**

of cluster design, centrally set with pear-shaped diamonds, flanked by marquise-shaped diamonds; *estimated total diamond weight: 13.05 carats; mounted in platinum; length: 1in.*

**\$40,000 - 60,000**

Accompanied by fourteen GIA reports. Please contact jewelry department for further information.



106

**AN IMPRESSIVE FANCY COLORED DIAMOND PENDANT**

centering a modified shield-shaped step-cut Fancy Deep Yellow-Brown diamond, weighing 24.23 carats; *mounted in 18k gold; length: 1 in.*

**\$200,000 - 300,000**

Accompanied by GIA report # 5202095583, dated February 27, 2019, stating the diamond as: Fancy Deep Yellow-Brown color, VVS2 clarity.





107

107

**A PAIR OF DIAMOND AND COLORED DIAMOND EARRINGS**

of cluster floral design, centrally set with marquise-shaped colored diamonds, accented by baguette-cut and marquise-shaped diamonds; *estimated total diamond weight: 6.80 carats; mounted in 18k white gold; length: 1 1/8in. (colored diamonds untested for origin of color)*

**\$5,000 - 10,000**



108

108

**A DIAMOND RING**

centrally set with an emerald-cut diamond, weighing 5.78 carats, flanked by tapered baguette-cut diamonds; *mounted in platinum; size 5 1/2*

**\$40,000 - 60,000**

Accompanied by GIA report # 6197830481, dated November 9, 2018, stating the diamond as: J color, VS1 clarity.





109



110



111

109

**A DIAMOND RING**

centering a round brilliant-cut diamond, weighing 5.01 carats; mounted in 18k white gold; size 6 3/4

**\$135,000 - 185,000**

Accompanied by GIA report # 6215729049, dated February 11, 2016, stating the diamond as: E color, VS1 clarity.

110

**A PAIR OF FANCY COLORED DIAMOND AND DIAMOND EARRINGS**

suspending pear-shaped modified brilliant-cut Fancy Yellow diamonds, weighing 1.99 and 1.74 carats, to round brilliant-cut diamond surmounts; estimated remaining diamond weight: 1.86 carats; mounted in platinum length: 1in.

**\$20,000 - 30,000**

Accompanied by GIA report # 17552980, dated January 30, 20148, stating the 1.99 carat diamond as: Fancy Yellow color, VS2 clarity.

Accompanied by GIA report # 5151968125, dated February 28, 2014, stating the 1.74 carat diamond as: Fancy Yellow color, VS2 clarity.

Accompanied by GIA report # 2216178375, dated November 24, 2015, stating the 0.46 carat diamond as: F color, VS2 clarity.

Accompanied by GIA report # 2186411249, dated October 9, 2018, stating the 0.46 carat diamond as: F color, VS1 clarity.

111

**A FANCY COLORED DIAMOND AND DIAMOND RING**

centering a cushion-shaped modified brilliant-cut Fancy Light Yellow diamond, weighing 4.01 carats, accented by round brilliant-cut diamonds; signed Allurion, no.RO11; mounted in 18k white gold; size 6

**\$22,000 - 28,000**

Accompanied by GIA report # 2195269467, dated April 10, 2018, stating the diamond as: Fancy Light Yellow color, VS2 clarity.

Kashmir sapphires were first discovered in the early 1880s when a landslide in the remote Kudi Valley of India occurred and the stunning blue stones were traded for common goods. Gaining knowledge of these stones, the Maharaja of Kashmir quickly claimed ownership of the mine and unearthed all the sapphires that could be found. The mine was only operational for five years and by 1887 it was mostly depleted. Periodically over the past decades the mine has been opened for short periods of time, but the majority of Kashmir sapphires on the market today are from over 100 years ago when the original deposit was found.

Adding to their allure, the color of a Kashmir sapphire is entirely unique to its region and exhibits a cornflower blue hue with a velvety quality that illuminates in any light. This important sapphire ring, lot 112, features a 15.23 carat cushion-shaped sapphire of Kashmir origin with no indications of heat enhancement and is an exceptional example of a Kashmir sapphire over 15 carats. Considered one of the rarest of gemstones, Kashmir sapphires are among the most highly coveted gemstones on the market and are fiercely sought after today.



112

**AN IMPORTANT SAPPHIRE AND COLORED DIAMOND RING**

centering a cushion-shaped mixed-cut sapphire, weighing 15.23 carats, within an ornate pink round brilliant-cut diamond setting; *estimated total diamond weight: 1.10 carats; mounted in platinum; size 7 (colored diamonds untested for origin of color)*

**\$1,275,000 - 1,775,000**

Accompanied by AGL report # 1099417, dated March 14, 2019, stating the sapphire as: Kashmir origin, no indications of heat or clarity enhancement.

Accompanied by Gubelin report # 17121022, dated January 12, 2018, stating the sapphire as: Kashmir origin, no indications of heating.

Accompanied by SSEF report # 92667, dated June 14, 2017, stating the sapphire as: Kashmir origin, no indications of heating.





**PROPERTY FROM THE ESTATE OF ELESABETH INGALLS  
GILLET**

113

**A FINE EMERALD AND DIAMOND RING**

of bombé design, centering an emerald-cut diamond, weighing 3.95 carats, and a rectangular-shaped emerald-cut emerald, weighing 3.29 carats, enhanced by pear-shaped diamonds; *estimated remaining diamond weight: 8.55 carats; mounted in platinum; size 4 1/4*

**\$60,000 - 100,000**

Accompanied by AGL report # 1099159, dated March 13, 2019, stating the emerald as: Colombian origin, indications of minor, traditional, enhancement.

Accompanied by GIA report # 2201091580, dated February 22, 2019, stating the diamond as: I color, VS1 clarity.





114



115

**PROPERTY FROM THE ESTATE OF AN OREGON LADY  
(LOTS 114, 115, 117, 118, 119)**

114

**A DIAMOND “POLO” WRISTWATCH, PIAGET**

manual winding, the dial set with single-cut diamonds, accented throughout with round brilliant-cut diamonds; *signed Piaget, ref. no.27505 902846; estimated total diamond weight: 6.20 carats; mounted in 18k white gold; circumference: 6 1/2in.*

**\$6,000 - 8,000**

115

**A FINE DIAMOND RING**

centering an oval-shaped brilliant-cut diamond, weighing 10.05 carats, flanked by bullet-shaped diamonds; *estimated remaining diamond weight: 2.00 carats; mounted in platinum; size 5*

**\$200,000 - 250,000**

Accompanied by GIA report # 6194889618, dated December 5, 2018, stating the diamond as: F color, VS2 clarity.



Highly coveted and desired for centuries, Fancy Pink diamonds can be found in some of the world's most important jewelry collections including the British Crown Jewels and the National Jewels of Iran. Graded Fancy Orange Pink by the Gemological Institute of America and weighing 12.62 carats, diamonds of this size and color are exceptional and rarely come up for auction.



116

**AN IMPORTANT FANCY COLORED DIAMOND  
AND DIAMOND RING**

centering a cut-cornered rectangular-shaped step-cut Fancy Orangy Pink diamond, weighing 12.62 carats, flanked by pear-shaped diamonds; *estimated remaining diamond weight: 1.50 carats; mounted in 18k rose gold; size 7*

**\$1,500,000 - 2,000,000**

Accompanied by GIA report # 14296394, dated July 6, 2018, stating the diamond as: Fancy Orangy Pink color, VS1 clarity.





117



118



119



**PROPERTY FROM THE ESTATE OF AN OREGON LADY (LOTS 114, 115, 117,118, 119)**

117  
**A DIAMOND PENDANT**  
centering a round brilliant-cut diamond, weighing 7.74 carats; *mounted in platinum; length: 22 1/16in.*

**\$75,000 - 120,000**

Accompanied by GIA report # 10538477, dated December 5, 2018, stating the diamond as: F color, VS2 clarity.

118  
**A PAIR OF DIAMOND EARRINGS**  
set with round brilliant-cut diamonds, weighing 5.19 and 5.02 carats; *mounted in 18k white gold; width: 7 /16in.*

**\$140,000 - 180,000**

Accompanied by GIA report # 10365810, dated December 5, 2018, stating the 5.19 carats diamond as: F color, VS2 clarity.

Accompanied by GIA report # 10139394, dated December 5, 2018, stating the 5.02 carats diamond as: F color, VS1 clarity.

119  
**A DIAMOND RING**  
centering a round-cornered rectangular-shaped modified brilliant-cut diamond, weighing 10.73 carats, flanked by similarly cut diamonds, weighing 3.54 and 3.16 carats; *signed ASHOKA no.R3478; mounted in platinum; size 5 1/2*

**\$220,000 - 280,000**

Accompanied by GIA report # 12140004, dated December 5, 2018, stating the 10.73 carat diamond as: H color, VS1 clarity.

Accompanied by GIA report # 2195891829, dated December 5, 2018, stating the 3.54 carat diamond as: I color, VS1 clarity.

Accompanied by GIA report # 14164255, dated December 5, 2018, stating the 3.16 carat diamond as: H color, VS2 clarity.



## DIAMOND INDEX

Lot No.	Carat	Cut	Color	Clarity	Certificate	Estimate
18	3.02	Rectangular	G	VS1	GIA 5191426549	\$20,000-30,000
82	2.01	Round	D	SI1	GIA 5176128231	\$12,000-18,000
71	3.87	Round	E	SI1	GIA 1196817756	\$35,000-55,000
99	2.23	Pear	G	VS1	GIA 5192831154	\$15,000-20,000
108	5.78	Emerald	J	VS1	GIA 6197830481	\$40,000-60,000
117	7.74	Round	F	VS2	GIA 10538477	\$75,000-120,000
118	5.19 & 5.02	Round	F	VS1 & VS2	GIA 10365810 GIA 10139394	\$140,000-180,000
115	10.05	Oval	F	VS2	GIA 6194889618	\$200,000-250,000
119	10.73, 3.54 & 3.16	Rectangular	H, I, H	VS1, VS1, VS2	GIA 12140004 GIA 2195891829 GIA 14164255	\$220,000-280,000
25	2.46	Rectangular	Fancy Yellow	VS1	GIA 8596599	\$6,000-8,000
83	3.02	Emerald	I	VS2	GIA 6207011246	\$20,000-30,000
86	5.18	Rectangular	D	VVS1	GIA 5374385	\$130,000-180,000
116	12.62	Rectangular	Fancy Orangy Pink	VS1	GIA 14296394	\$1,500,000-2,000,000
103	9.22	Square	Fancy Intense Yellow	Internally Flawless	GIA 13921940	\$200,000-300,000
109	5.01	Round	E	VS1	GIA 6215729049	\$135,000-185,000
113	3.95	Emerald	I	VS1	GIA 2201091580	\$60,000-100,000
106	24.23	Shield	Fancy Deep Yellow-Brown	VVS2	GIA 5202095583	\$200,000-300,000
89	5.35	Emerald	J	VS1	GIA 6207160715	\$40,000-60,000
111	4.01	Cushion	Fancy Light Yellow	VS2	GIA 2195269467	\$22,000-28,000
85	1.57 & 1.56	Pear	G	SI2 & VS1	GIA 13181064 GIA 16136498	\$20,000-30,000
110	1.99 & 1.74	Pear	Fancy Yellow	VS2	GIA 17552980 GIA 5151968125	\$20,000-30,000

\* next to color - not tested for origin of color

\* next to piece - other significant stones within the piece

\* next to weight - approximate weight

\* next to cert - lab graded color only

\* next to lot number - Bonhams specialists disagree with the grade. Please see a specialist for details.

This list is provided for your convenience based on the opinion of our gemologists.

It in no way represents a guarantee or warranty.

Bonhams is not responsible for any discrepancies between this information & other opinions.

**CERTIFIED RUBY INDEX**

Lot No.	Carat/Dimensions	Cut/Shape	Origin	Treatment	Laboratory Report
22	1.20	Heart	Thai	None	GIA
90	3.30	Octagonal	Burmese	None	Gubelin

**CERTIFIED SAPPHIRE INDEX**

Lot No.	Carat/Dimensions	Cut/Shape	Origin	Treatment	Laboratory Report
99	4.71	Pear	Ceylon	None	AGL
33	0.95	Cushion	Kashmir	None	AGL
95	4.70	Round		None	GIA
112	15.23	Cushion	Kashmir	None	AGL, Gubelin, SSEF
101	10.20	Oval	Sri Lankan	None	GRS
72	10.11	Oval	Madagascar	None	SSEF
80	15.35	Oval	Ceylon	None	AGL
69	See Condition Report	Oval	Thai and Ceylon	None	AGL
73	3.4	Oval		None	AGL

**CERTIFIED EMERALD INDEX**

Lot No.	Carat/Dimensions	Cut/Shape	Origin	Treatment	Laboratory Report
42	30.00	Pear	Colombian	Minor	Gubelin
93	3.19	Oval	Colombian	Minor, Traditional	AGL
45	5.02	Square	Colombian	Insignificant, Traditional	AGL
113	3.29	Rectangular	Colombian	Minor, Traditional	AGL
66	0.85	Square	Colombian	None	AGL
70	2.12	Square	Colombian	Minor, Modern	AGL

**SPINEL INDEX**

Lot No.	Carat/Dimensions	Cut/Shape	Origin	Treatment	Laboratory Report
75	12.69	Cushion	Tanzanian	None	AGL

**CERTIFIED PEARL INDEX**

Lot No.	Carat/Dimensions	Cut/Shape	Origin	Treatment	Laboratory Report
62	Pear	8.3 x 7.9mm	Natural Saltwater	None	GIA
57	Round	3.8 x 7.7mm	Natural Saltwater	None	GIA
51	Semi-Baroque	12.5 x 11.1 x 10.6mm	Natural		GIA

**CERTIFIED JADE INDEX**

Lot No.	Carat/Dimensions	Cut/Shape	Origin	Treatment	Laboratory Report
41	8.1 to 11.5mm	Beads	Jadeite Jade - 'A'	None	Mason Kay

# Bonhams

AUCTIONEERS SINCE 1793

## Global Jewelry Auctions 2019

---

**23 MAY**

Edinburgh Jewellery

**26 MAY**

Hong Kong Jewels and Jadeite

**11 JUNE**

California Jewels

**12 JUNE**

Knightsbridge Jewels

**10 JULY**

Knightsbridge Jewels

**10 SEPTEMBER**

California Jewels

**11 SEPTEMBER**

Knightsbridge Jewels

**24 SEPTEMBER**

London Jewels

**26 SEPTEMBER**

New York Jewels

**ENQUIRIES**

**NEW YORK**

+1 212 644 9046

**LOS ANGELES**

+1 323 436 5424

**HONG KONG**

+852 2918 4321

**LONDON, NEW BOND STREET**

+44 207 468 8278

**LONDON, KNIGHTSBRIDGE**

+44 20 7393 3977

**EDINBURGH**

+44 131 240 0915

[jewelry.us@bonhams.com](mailto:jewelry.us@bonhams.com)  
#BonhamsJewels





# Bonhams

AUCTIONEERS SINCE 1793



## California Jewels

Los Angeles | June 11, 2019

CONSIGNMENTS NOW INVITED

### INQUIRIES

Bonhams  
7601 W. Sunset Blvd  
Los Angeles, CA 90046  
+1 (323) 436 5424  
[bonhams.com/jewelry](http://bonhams.com/jewelry)

Dana Ehrman  
[dana.ehrman@bonhams.com](mailto:dana.ehrman@bonhams.com)  
Alexis Vourvoulis  
[alexis.vourvoulis@bonhams.com](mailto:alexis.vourvoulis@bonhams.com)  
Emily Waterfall  
[emily.waterfall@bonhams.com](mailto:emily.waterfall@bonhams.com)

# Bonhams

AUCTIONEERS SINCE 1793



## Hong Kong Jewels and Jadeite

Hong Kong | 26 May 2019

### VENUE

Bonhams Hong Kong Gallery

### ENQUIRIES

+852 2918 4321

[jewellery.hk@bonhams.com](mailto:jewellery.hk@bonhams.com)

[bonhams.com/jewelry](http://bonhams.com/jewelry)

**A 9.99CT COLOMBIAN NO OIL  
EMERALD AND DIAMOND RING**

HK\$4,800,000 – 6,000,000 \*

US\$600,000 – 760,000 \*



# Bonhams

AUCTIONEERS SINCE 1793



## The Art of Time

New York | October 2019

### INQUIRIES

Jonathan Snellenburg  
+1 (212) 461 6530  
jonathan.snellenburg@bonhams.com  
[bonhams.com/clocks](https://www.bonhams.com/clocks)

**PATEK PHILIPPE. A FINE AND RARE 18K GOLD DUAL TIME ZONE WRISTWATCH WITH INDEPENDENTLY ADJUSTABLE HOUR HAND, REF: 2597, CIRCA 1960.**

## CONDITIONS OF SALE

The following Conditions of Sale, as amended by any published or posted notices or verbal announcements during the sale, constitute the entire terms and conditions on which property listed in the catalog shall be offered for sale or sold by Bonhams & Butterfields Auctioneers Corp. and any consignor of such property for whom we act as agent. If live online bidding is available for the subject auction, additional terms and conditions of sale relating to online bidding will apply; see [www.bonhams.com/WebTerms](http://www.bonhams.com/WebTerms) for the supplemental terms. As used herein, "Bonhams," "we" and "us" refer to Bonhams & Butterfields Auctioneers Corp.

1. As used herein, the term "bid price" means the price at which a lot is successfully knocked down to the purchaser. The term "purchase price" means the aggregate of (a) the bid price, (b) a PREMIUM retained by us and payable by the purchaser EQUAL TO 27.5% OF THE FIRST \$3,000 OF THE BID PRICE, 25% OF THE AMOUNT OF THE BID PRICE ABOVE \$3,000 UP TO AND INCLUDING \$400,000, 20% OF THE AMOUNT OF THE BID PRICE ABOVE \$400,000 UP TO AND INCLUDING \$4,000,000, AND 13.9% OF THE AMOUNT OF THE BID PRICE OVER \$4,000,000, and (c) unless the purchaser is exempt by law from the payment thereof, any Alabama, Arizona, California, Colorado, Connecticut, Florida, Georgia, Hawaii, Idaho, Illinois, Iowa, Indiana, Kentucky, Louisiana, Maine, Massachusetts, Michigan, Minnesota, Nevada, New Jersey, New York, North Carolina, Ohio, Pennsylvania, Rhode Island, Texas, Utah, Virginia, Washington, D.C., Washington state, Wisconsin, Wyoming or other state or local sales tax (or compensating use tax) and other applicable taxes. With regard to New York sales tax, please refer to the "Sales and Use Tax" section of these Conditions of Sale.

2. On the fall of the auctioneer's hammer, the highest bidder shall have purchased the offered lot in accordance and subject to compliance with all of the conditions set forth herein and (a) assumes full risk and responsibility therefor, (b) if requested will sign a confirmation of purchase, and (c) will pay the purchase price in full or such part as we may require for all lots purchased. No lot may be transferred. Any person placing a bid as agent on behalf of another (whether or not such person has disclosed that fact or the identity of the principal) may be jointly and severally liable with the principal under any contract resulting from the acceptance of a bid.

Unless otherwise agreed, payment in good funds is due and payable within five (5) business days following the auction sale. Whenever the purchaser pays only a part of the total purchase price for one or more lots purchased, we may apply such payments, in our sole discretion, to the lot or lots we choose. Payment will not be deemed made in full until we have collected good funds for all amounts due.

Payment for purchases may be made in or by (a) cash, (b) cashier's check or money order, (c) personal check with approved credit drawn on a U.S. bank, (d) wire transfer or other immediate bank transfer, or (e) Visa, MasterCard, American Express or Discover credit, charge or debit card. A processing fee will be assessed on any returned checks. Please note that the amount of cash notes and cash equivalents that can be accepted from a given purchaser may be limited.

To the fullest extent permitted by applicable law: The purchaser grants us a security interest in the property, and we may retain as collateral security for the purchaser's obligations to us, any property and all monies held or received by us for the account of the purchaser, in our possession. We also retain all rights of a secured party under the California Commercial Code. If the foregoing conditions or any other applicable conditions herein are not complied with, in addition to all other remedies available to us and the consignor by law, we may at our election: (a) hold the purchaser liable for the full purchase price and any late charges, collection costs, attorneys' fees and costs, expenses and incidental damages incurred by us or the consignor arising out of the purchaser's breach; (b) cancel the sale, retaining as liquidated damages all payments made

by the purchaser; and/or (c) cancel the sale and/or resell the purchased property, at public auction and/or by private sale, and in such event the purchaser shall be liable for the payment of all consequential damages, including any deficiencies or monetary losses, and all costs and expenses of such sale or sales, our commissions at our standard rates, all other charges due hereunder, all late charges, collection costs, attorneys' fees and costs, expenses and incidental damages. In addition, where two or more amounts are owed in respect of different transactions by the purchaser to us, to Bonhams 1793 Limited and/or to any of our other affiliates, subsidiaries or parent companies worldwide within the Bonhams Group, we reserve the right to apply any monies paid in respect of a transaction to discharge any amount owed by the purchaser. If all fees, commissions, premiums, bid prices and other sums due to us from the purchaser are not paid promptly as provided in these Conditions of Sale, we reserve the right to impose a finance charge equal to 1.5% per month (or, if lower, the maximum nonusurious rate of interest permitted by applicable law), on all amounts due to us beginning on the 31st day following the sale until payment is received, in addition to other remedies available to us by law.

3. We reserve the right to withdraw any property and to divide and combine lots at any time before such property's auction. Unless otherwise announced by the auctioneer at the time of sale, all bids are per lot as numbered in the catalog and no lots shall be divided or combined for sale.

4. We reserve the right to reject a bid from any bidder, to split any bidding increment, and to advance the bidding in any manner the auctioneer may decide. In the event of any dispute between bidders, or in the event the auctioneer doubts the validity of any bid, the auctioneer shall have sole and final discretion either to determine the successful bidder or to re-offer and resell the article in dispute. If any dispute arises after the sale, our sales records shall be conclusive in all respects.

5. If we are prevented by fire, theft or any other reason whatsoever from delivering any property to the purchaser or a sale otherwise cannot be completed, our liability shall be limited to the sum actually paid therefor by the purchaser and shall in no event include any compensatory, incidental or consequential damages.

6. If a lot is offered subject to a reserve, we may implement such reserve by bidding on behalf of the consignor, whether by opening bidding or continuing bidding in response to other bidders until reaching the reserve. If we have an interest in an offered lot and the proceeds therefrom other than our commissions, we may bid therefor to protect such interest. CONSIGNORS ARE NOT ALLOWED TO BID ON THEIR OWN ITEMS.

7. All statements contained in the catalog or in any bill of sale, condition report, invoice or elsewhere as to authorship, period, culture, source, origin, measurement, quality, rarity, provenance, importance, exhibition and literature of historical relevance, or physical condition ARE QUALIFIED STATEMENTS OF OPINION AND NOT REPRESENTATIONS OR WARRANTIES. No employee or agent of Bonhams is authorized to make on our behalf or on that of the consignor any representation or warranty, oral or written, with respect to any property.

8. All purchased property shall be removed from the premises at which the sale is conducted by the date(s) and time(s) set forth in the "Buyer's Guide" portion of the catalog. If not so removed, daily storage fees will be payable to us by the purchaser as set forth therein. We reserve the right to transfer property not so removed to an offsite warehouse at the purchaser's risk and expense, as set forth in more detail in the "Buyer's Guide." Accounts must be settled in full before property will be released. Packing and handling of purchased lots are the responsibility of the purchaser. Bonhams can provide packing and shipping services for certain items as noted in the "Buyer's Guide" section of the catalog.

9. The copyright in the text of the catalog and the photographs, digital images and illustrations of lots in the catalog belong to Bonhams or its licensors. You will not reproduce or permit anyone else to reproduce such text, photographs, digital images or illustrations without our prior written consent.

10. These Conditions of Sale shall bind the successors and assigns of all bidders and purchasers and inure to the benefit of our successors and assigns. No waiver, amendment or modification of the terms hereof (other than posted notices or oral announcements during the sale) shall bind us unless specifically stated in writing and signed by us. If any part of these Conditions of Sale is for any reason invalid or unenforceable, the rest shall remain valid and enforceable.

11. These Conditions of Sale and the purchaser's and our respective rights and obligations hereunder are governed by the laws of the State of California. By bidding at an auction, each purchaser and bidder agrees to be bound by these Conditions of Sale. Any dispute, controversy or claim arising out of or relating to this agreement, or the breach, termination or validity thereof, brought by or against Bonhams (but not including claims brought against the consignor by the purchaser of lots consigned hereunder) shall be resolved by the procedures set forth below.

### SALES AND USE TAX

New York sales tax is charged on the hammer price, buyer's premium and any other applicable charges on any property collected or delivered in New York State, regardless of the state or country in which the purchaser resides or does business. Purchasers who make direct arrangements for collection by a shipper who is considered a "private" or "contract" carrier by the New York Department of Taxation and Finance will be charged New York sales tax, regardless of the destination of the property. Property collected for delivery to a destination outside of New York by a shipper who is considered a "common carrier" by the New York Department of Taxation and Finance (e.g. United States Postal Service, United Parcel Service, and FedEx) is not subject to New York sales tax, but if it is delivered into any state in which Bonhams is registered or otherwise conducts business sufficient to establish a nexus, Bonhams may be required by law to collect and remit the appropriate sales tax in effect in such state. Property collected for delivery outside of the United States by a freight-forwarder who is registered with the Transportation Security Administration ("TSA") is not subject to New York sales tax.

### MEDIATION AND ARBITRATION PROCEDURES

(a) Within 30 days of written notice that there is a dispute, the parties or their authorized and empowered representatives shall meet by telephone and/or in person to mediate their differences. If the parties agree, a mutually acceptable mediator shall be selected and the parties will equally share such mediator's fees. The mediator shall be a retired judge or an attorney familiar with commercial law and trained in or qualified by experience in handling mediations. Any communications made during the mediation process shall not be admissible in any subsequent arbitration, mediation or judicial proceeding. All proceedings and any resolutions thereof shall be confidential, and the terms governing arbitration set forth in paragraph (c) below shall govern.

(b) If mediation does not resolve all disputes between the parties, or in any event no longer than 60 days after receipt of the written notice of dispute referred to above, the parties shall submit the dispute for binding arbitration before a single neutral arbitrator. Such arbitrator shall be a retired judge or an attorney familiar with commercial law and trained in or qualified by experience in handling arbitrations. Such arbitrator shall make all appropriate disclosures required by law. The arbitrator shall be drawn from a panel of a national arbitration service agreed to by the parties, and shall be selected as follows: (i) If the national arbitration service has specific rules or procedures, those rules or procedures shall be followed; (ii) If the national arbitration service does not

have rules or procedures for the selection of an arbitrator, the arbitrator shall be an individual jointly agreed to by the parties. If the parties cannot agree on a national arbitration service, the arbitration shall be conducted by the American Arbitration Association, and the arbitrator shall be selected in accordance with the Rules of the American Arbitration Association. The arbitrator's award shall be in writing and shall set forth findings of fact and legal conclusions.

(c) Unless otherwise agreed to by the parties or provided by the published rules of the national arbitration service:

(i) the arbitration shall occur within 60 days following the selection of the arbitrator;

(ii) the arbitration shall be conducted in the designated location, as follows: (A) in any case in which the subject auction by Bonhams took place or was scheduled to take place in the State of New York or Connecticut or the Commonwealth of Massachusetts, the arbitration shall take place in New York City, New York; (B) in all other cases, the arbitration shall take place in the city of San Francisco, California; and

(iii) discovery and the procedure for the arbitration shall be as follows:

(A) All arbitration proceedings shall be confidential;

(B) The parties shall submit written briefs to the arbitrator no later than 15 days before the arbitration commences;

(C) Discovery, if any, shall be limited as follows: (I) Requests for no more than 10 categories of documents, to be provided to the requesting party within 14 days of written request therefor; (II) No more than two (2) depositions per party, provided however, the deposition(s) are to be completed within one (1) day; (III) Compliance with the above shall be enforced by the arbitrator in accordance with California law;

(D) Each party shall have no longer than eight (8) hours to present its position. The entire hearing before the arbitrator shall not take longer than three (3) consecutive days;

(E) The award shall be made in writing no more than 30 days following the end of the proceeding. Judgment upon the award rendered by the arbitrator may be entered by any court having jurisdiction thereof.

To the fullest extent permitted by law, and except as

required by applicable arbitration rules, each party shall bear its own attorneys' fees and costs in connection with the proceedings and shall share equally the fees and expenses of the arbitrator.

**LIMITED RIGHT OF RESCISSION**

If within one (1) year from the date of sale, the original purchaser (a) gives written notice to us alleging that the identification of Authorship (as defined below) of such lot as set forth in the **BOLD TYPE** heading of the catalog description of such lot (as amended by any saleroom notices or verbal announcements during the sale) is not substantially correct based on a fair reading of the catalog (including the terms of any glossary contained therein), and (b) within 10 days after such notice returns the lot to us in the same condition as at the time of sale, and (c) establishes the allegation in the notice to our satisfaction (including by providing one or more written opinions by recognized experts in the field, as we may reasonably require), then the sale of such lot will be rescinded and, unless we have already paid to the consignor monies owed him in connection with the sale, the original purchase price will be refunded.

If, prior to receiving such notice from the original purchaser alleging such defect, we have paid the consignor monies owed him in connection with the sale, we shall pay the original purchaser the amount of our commissions, any other sale proceeds to which we are entitled and applicable taxes received from the purchaser on the sale and make demand on the consignor to pay the balance of the original purchase price to the original purchaser. Should the consignor fail to pay such amount promptly, we may disclose the identity of the consignor and assign to the original purchaser our rights against the consignor with respect to the lot the sale of which is sought to be rescinded. Upon such disclosure and assignment, any liability of Bonhams as consignor's agent with respect to said lot shall automatically terminate.

The foregoing limited right of rescission is available to the original purchaser only and may not be assigned to or relied upon by any subsequent transferee of the property sold. The purchaser hereby accepts the benefit of the consignor's warranty of title and other representations and warranties made by the consignor for the purchaser's benefit. Nothing in this section shall be construed as an admission by us of any representation of fact, express or implied, obligation or responsibility with respect to any lot. **THE PURCHASER'S SOLE AND**

**EXCLUSIVE REMEDY AGAINST BONHAMS FOR ANY REASON WHATSOEVER IS THE LIMITED RIGHT OF RESCISSION DESCRIBED IN THIS SECTION.**

"Authorship" means only the identity of the creator, the period, culture and source or origin of the lot, as the case may be, as set forth in the **BOLD TYPE** heading of the print catalog entry. The right of rescission does not extend to: (a) works of art executed before 1870 (unless these works are determined to be counterfeits created since 1870), as this is a matter of current scholarly opinion which can change; (b) titles, descriptions, or other identification of offered lots, which information normally appears in lower case type below the **BOLD TYPE** heading identifying the Authorship; (c) Authorship of any lot where it was specifically mentioned that there exists a conflict of specialist or scholarly opinion regarding the Authorship of the lot at the time of sale; (d) Authorship of any lot which as of the date of sale was in accordance with the then generally-accepted opinion of scholars and specialists regarding the same; or (e) the identification of periods or dates of creation in catalog descriptions which may be proven inaccurate by means of scientific processes that are not generally accepted for use until after publication of the catalog in which the property is offered or that were unreasonably expensive or impractical to use at the time of such publication.

**LIMITATION OF LIABILITY**

EXCEPT AS EXPRESSLY PROVIDED ABOVE, ALL PROPERTY IS SOLD "AS IS." NEITHER BONHAMS NOR THE CONSIGNOR MAKES ANY REPRESENTATION OR WARRANTY, EXPRESS OR IMPLIED, AS TO THE MERCHANTABILITY, FITNESS OR CONDITION OF THE PROPERTY OR AS TO THE CORRECTNESS OF DESCRIPTION, GENUINENESS, ATTRIBUTION, PROVENANCE OR PERIOD OF THE PROPERTY OR AS TO WHETHER THE PURCHASER ACQUIRES ANY COPYRIGHTS OR OTHER INTELLECTUAL PROPERTY RIGHTS IN LOTS SOLD OR AS TO WHETHER A WORK OF ART IS SUBJECT TO THE ARTIST'S MORAL RIGHTS OR OTHER RESIDUAL RIGHTS OF THE ARTIST. THE PURCHASER EXPRESSLY ACKNOWLEDGES AND AGREES THAT IN NO EVENT SHALL BONHAMS BE LIABLE FOR ANY DAMAGES INCLUDING, WITHOUT LIMITATION, ANY COMPENSATORY, INCIDENTAL OR CONSEQUENTIAL DAMAGES.

**SELLER'S GUIDE**

**SELLING AT AUCTION**

Bonhams can help you every step of the way when you are ready to sell art, antiques and collectible items at auction. Our regional offices and representatives throughout the US are available to service all of your needs. Should you have any further questions, please visit our website at [www.bonhams.com/us](http://www.bonhams.com/us) for more information or call our Client Services Department at +1 (212) 644 9001.

**AUCTION ESTIMATES**

The first step in the auction process is to determine the auction value of your property. Bonhams' world-renowned specialists will evaluate your special items at no charge and in complete confidence. You can obtain an auction estimate in many ways:

- Attend one of our Auction Evaluation Events held regularly at our galleries and in other major metropolitan areas. The updated schedule for Bonhams Auction Evaluation Events is available at [www.bonhams.com/us](http://www.bonhams.com/us).
- Call our Client Services Department to schedule a private appointment at one of our galleries. If you have a large collection, our specialists can travel, by appointment, to evaluate your property on site.
- Send clear photographs to us of each individual item, including item dimensions and other pertinent information with each picture. Photos should be sent to Bonhams' address in envelopes marked

as "photo auction estimate". Alternatively, you can submit your request using our online form at [www.bonhams.com/us](http://www.bonhams.com/us). Digital images may be attached to the form. Please limit your images to no more than five (5) per item.

**CONSIGNING YOUR PROPERTY**

After you receive an estimate, you may consign your property to us for sale in the next appropriate auction. Our staff assists you throughout the process, arranging transportation of your items to our galleries (at the consignor's expense), providing a detailed inventory of your consignment, and reporting the prices realized for each lot. We provide secure storage for your property in our warehouses and all items are insured throughout the auction process. You will receive payment for your property approximately 35 days after completion of sale.

Sales commissions vary with the potential auction value of the property and the particular auction in which the property is offered. Please call us for commission rates.

**PROFESSIONAL APPRAISAL SERVICES**

Bonhams' specialists conduct insurance and fair market value appraisals for private collectors, corporations, museums, fiduciaries and government entities on a daily basis. Insurance appraisals, used for insurance purposes, reflect the cost of replacing property in today's retail market. Fair market value appraisals are used for estate,

tax and family division purposes and reflect prices paid by a willing buyer to a willing seller.

When we conduct a private appraisal, our specialists will prepare a thorough inventory listing of all your appraised property by category. Valuations, complete descriptions and locations of items are included in the documentation.

Appraisal fees vary according to the nature of the collection, the amount of work involved, the travel distance, and whether the property is subsequently consigned for auction.

Our appraisers are available to help you anywhere and at any time. Please call our Client Services Department to schedule an appraisal.

**ESTATE SERVICES**

Since 1865, Bonhams has been serving the needs of fiduciaries – lawyers, trust officers, accountants and executors – in the disposition of large and small estates. Our services are specially designed to aid in the efficient appraisal and disposition of fine art, antiques, jewelry, and collectibles. We offer a full range of estate services, ranging from flexible financial terms to tailored accounting for heirs and their agents to world-class marketing and sales support.

For more information or to obtain a detailed Trust and Estates package, please visit our website at [www.bonhams.com/us](http://www.bonhams.com/us) or contact our Client Services Department.

# BUYER'S GUIDE

## BIDDING & BUYING AT AUCTION

Whether you are an experienced bidder or an enthusiastic novice, auctions provide a stimulating atmosphere unlike any other. Bonhams previews and sales are free and open to the public. As you will find in these directions, bidding and buying at auction is easy and exciting. Should you have any further questions, please visit our website at [www.bonhams.com](http://www.bonhams.com) or call our Client Services Department at +1 (212) 644 9001.

### Catalogs

Before each auction we publish illustrated catalogs. Our catalogs provide descriptions and estimated values for each "lot." A lot may refer to a single item or to a group of items auctioned together. The catalogs also include the dates and the times for the previews and auctions. We offer our catalogs by subscription or by single copy. For information on subscribing to our catalogs, you may refer to the subscription form in this catalog, call our Client Services Department, or visit our website at [www.bonhams.com/us](http://www.bonhams.com/us).

### Previews

Auction previews are your chance to inspect each lot prior to the auction. We encourage you to look closely and examine each object on which you may want to bid so that you will know as much as possible about it. Except as expressly set forth in the Conditions of Sale, items are sold "as is" and with all faults; illustrations in our catalogs, website and other materials are provided for identification only. At the previews, our staff is always available to answer your questions and guide you through the auction process. Condition reports may be available upon request.

### Estimates

Bonhams catalogs include low and high value estimates for each lot, exclusive of the buyer's premium and tax. The estimates are provided as an approximate guide to current market value based primarily on previous auction results for comparable pieces, and should not be interpreted as a representation or prediction of actual selling prices. They are determined well in advance of a sale and are subject to revision. Please contact us should you have any questions about value estimates.

### Reserves

Unless indicated by the  $\sigma$  symbol next to the lot number, which denotes no reserve, all lots in the catalog are subject to a reserve. The reserve is the minimum auction price that the consignor is willing to accept for a lot. This amount is confidential and does not exceed the low estimate value.

### Auction House's Interest in Property Offered at Auction

On occasion, Bonhams may offer property in which it has an ownership interest in whole or in part or otherwise has an economic interest. Such property, if any, is identified in the catalog with a  $\blacktriangle$  symbol next to the lot number(s).

Bonhams may also offer property for a consignor that has been guaranteed a minimum price for its property by Bonhams or jointly by Bonhams and a third party. Bonhams and any third parties providing a guarantee may benefit financially if the guaranteed property is sold successfully and may incur a financial loss if its sale is not successful. Such property, if any, is identified in the catalog with a  $\circ$  symbol next to the lot number(s).

### Bidding at Auction

At Bonhams, you can bid in many ways: in person, via absentee bid, over the phone, or via Bonhams' live online bidding facility. Absentee bids can be submitted in person, online, via fax or via email.

Valid Bonhams client accounts are required to participate in bidding activity. You can obtain registration information online, at the reception desk or by calling our Client Services Department.

By bidding at auction, whether in person or by agent, by absentee bid, telephone, online or other means, the buyer or bidder agrees to be bound by the Conditions of Sale.

Lots are auctioned in consecutive numerical order as they appear in the catalog. Bidding normally begins below the low estimate. The auctioneer will accept bids from interested parties present in the saleroom, from telephone bidders, and

from absentee bidders who have left written bids in advance of the sale. The auctioneer may also execute bids on behalf of the consignor by placing responsive or consecutive bids for a lot up to the amount of the reserve, but never above it.

We assume no responsibility for failure to execute bids for any reason whatsoever.

### In Person

If you are planning to bid at auction for the first time, you will need to register at the reception desk in order to receive a numbered bid card. To place a bid, hold up your card so that the auctioneer can clearly see it. Decide on the maximum auction price that you wish to pay, exclusive of buyer's premium and tax, and continue bidding until your bid prevails or you reach your limit. If you are the successful bidder on a lot, the auctioneer will acknowledge your paddle number and bid amount.

### Absentee Bids

As a service to those wishing to place bids, we may at our discretion accept bids without charge in advance of auction online or in writing on bidding forms available from us. "Buy" bids will not be accepted; all bids must state the highest bid price the bidder is willing to pay. Our auction staff will try to bid just as you would, with the goal of obtaining the item at the lowest bid price possible. In the event identical bids are submitted, the earliest bid submitted will take precedence. Absentee bids shall be executed in competition with other absentee bids, any applicable reserve, and bids from other auction participants. A friend or agent may place bids on your behalf, provided that we have received your written authorization prior to the sale. Absentee bid forms are available in our catalogs, online at [www.bonhams.com/us](http://www.bonhams.com/us), at offsite auction locations, and at our San Francisco, Los Angeles and New York galleries.

### By Telephone

Under special circumstances, we can arrange for you to bid by telephone. To arrange for a telephone bid, please contact our Client Services Department a minimum of 24 hours prior to the sale.

### Online

We offer live online bidding for most auctions and accept absentee bids online for all our auctions. Please visit [www.bonhams.com/us](http://www.bonhams.com/us) for details.

### Bid Increments

Bonhams generally uses the following increment multiples as bidding progresses:

\$50-200.....	by \$10s
\$200-500.....	by \$20/50/80s
\$500-1,000.....	by \$50s
\$1,000-2,000.....	by \$100s
\$2,000-5,000.....	by \$200/500/800s
\$5,000-10,000.....	by \$500s
\$10,000-20,000.....	by \$1,000s
\$20,000-50,000.....	by \$2,000/5,000/8,000s
\$50,000-100,000.....	by \$5,000s
\$100,000-200,000.....	by \$10,000s
above \$200,000.....	at auctioneer's discretion

**The auctioneer may split or reject any bid at any time at his or her discretion as outlined in the Conditions of Sale.**

### Currency Converter

Solely for the convenience of bidders, a currency converter may be provided at Bonhams' auctions. The rates quoted for conversion of other currencies to U.S. Dollars are indications only and should not be relied upon by a bidder, and neither Bonhams nor its agents shall be responsible for any errors or omissions in the operation or accuracy of the currency converter.

### Buyer's Premium

A buyer's premium is added to the winning bid price of each individual lot purchased, at the rates set forth in the Conditions of Sale. The winning bid price plus the premium constitute the purchase price for the lot. Applicable sales taxes are computed based on this figure, and the total becomes your final purchase price.

Unless specifically illustrated and noted, fine art frames are not included in the estimate or purchase price. Bonhams accepts no liability for damage or loss to frames during storage or shipment.

All sales are final and subject to the Conditions of Sale found in our catalogs, on our website, and available at the reception desk.

### Payment

All buyers are asked to pay and pick up by 3pm on the business day following the auction. Payment may be made to Bonhams by cash, checks drawn on a U.S. bank, money order, wire transfer, or by Visa, MasterCard, American Express or Discover credit or charge card or debit card. All items must be paid for within 5 business days of the sale. Please note that payment by personal or business check may result in property not being released until purchase funds clear our bank. For payments sent by mail, please remit to Cashier Department, 220 San Bruno Avenue, San Francisco, CA 94103.

### Sales Tax

Residents of states listed in Paragraph 1 of the Conditions of Sale must pay applicable sales tax. Other state or local taxes (or compensation use taxes) may apply. Sales tax will be automatically added to the invoice unless a valid resale number has been furnished or the property is shipped via common carrier to destinations outside the states listed in the Conditions of Sale. If you wish to use your resale license please contact Cashiers for our form.

### Shipping & Removal

Bonhams can accommodate shipping for certain items. Please contact our Cashiers Department for more information or to obtain a quote. Carriers are not permitted to deliver to PO boxes.

International buyers are responsible for all import/export customs duties and taxes. An invoice stating the actual purchase price will accompany all international purchases.

### Collection of Purchases

Please arrange for the packing and transport of your purchases prior to collection at our office. If you are sending a third party shipper, please request a release form from us and return it to +1 (212) 644 9009 prior to your scheduled pickup. To schedule collection of purchases, please call +1 (212) 644 9001.

### Auction Results

All you need is a touch-tone telephone and the lot number. Auction results are usually available on the next business day following the sale or online at [www.bonhams.com/us](http://www.bonhams.com/us).

### DIAMONDS, COLORED STONES & PEARLS

The Jewelry department of Bonhams & Butterfields recognizes that there are many various forms of treatments and enhancements used in diamonds and colored stones in order to improve their appearance and or color. Techniques such as heat treatment have been used to improve the color and transparency of both sapphires and rubies in addition to other gemstones. Techniques such as oiling have been used to enhance the clarity of emeralds while dying has been used to effect the color of jade. Techniques such as heat treatment, oiling, resin impregnation, irradiation, color diffusion, dying, fracture filling, and HTHP are just a few off the techniques that are in use today. Prospective buyers are therefore reminded that unless otherwise noted in our catalog description it must be assumed that some form of enhancement may have been used and that such treatment may not always be permanent or detectable and that our estimates have taken such possibilities into account. As a matter of policy, Bonhams & Butterfields endeavors to obtain certificates from recognized gemological laboratories when such certificates are deemed crucial to the authenticity of a gemstone. It is not possible however to gain certificates for all items offered for sale and it is therefore recommended where there is no mention of a certificate that all prospective buyers consult with one of our department specialists prior to purchase of such items.

PLEASE NOTE: A number of laboratories issue certificates that give more detailed descriptions of gemstones, however there may not be consensus between different laboratories on the degrees, or types of treatment for any particular gemstone. Neither is there necessarily consensus between different laboratories, or private appraisers, on the grading of diamonds. All gemstone weights are approximations only and although an independent laboratory grading may be used in the catalog text, we cannot guarantee such gradings.

Images shown may appear smaller or larger than actual size.

Although we endeavor to mention in our descriptions significant defects, needed repairs, absent stones and the like, **WE DO NOT GUARANTEE THAT THE DESCRIPTIONS ARE COMPREHENSIVE.** Please examine all lots carefully. It is the responsibility of the prospective bidder, or his agent, to determine the condition of lots during the preview. Condition reports have been created for most lots in this auction, and are available upon request. Please contact the Jewelry department at least two days prior to the sale date for additional information.

### NOTICE REGARDING BURMESE JADEITE AND RUBIES

Current law dictates that jadeite and rubies of Burmese origin and any articles of jewelry containing jadeite or rubies of Burmese origin may not be imported into the U.S. Certification that such jadeite or rubies were not mined in or extracted from Burma is required for importation of them into the U.S.

It is the responsibility of the buyer to investigate any applicable restrictions on purchased property and to obtain any export or import licenses and/or certificates as well as any other required documentation before shipping. The buyer's inability to export or import any such items or to do so timely shall not serve as the basis for any cancellation or rescission of the sale or any delay in payment. Prospective buyers who are uncertain as to whether a lot is subject to these restrictions or any other restrictions on importation or exportation are advised to consult with the specialist department in which the property is offered.

### REGULATED SPECIES MATERIALS AND CITES PERMITS

The export of a lot from the United States or import into certain countries may be subject to export or import regulations, licensure and/or other restrictions; in particular, lots containing plant or animal materials such as ivory, rhinoceros horn, tortoiseshell, coral, whalebone or certain types of woods, irrespective of age or value, may require the granting of one or more export or import licenses

or certificates, or may be banned from import altogether by some countries. Moreover, the ability to obtain an export license or certificate does not insure the ability to obtain an import license or certificate in another country. Lots that contain such regulated species materials may also not be eligible for exportation or for re-importation into the United States if they are not at least 100 years of age, and, under current law, lots containing African Elephant Ivory may no longer be re-imported into the United States regardless of age. In addition, resales of lots containing certain regulated species materials may be subject to restrictions in some jurisdictions.

Lots noted in the catalog with a **Y** next to the lot number contain one or more such regulated plant or animal materials. **It is the buyer's responsibility to investigate any such restrictions and to obtain any relevant export or import licenses. Please note that this process is governed by local authorities and may take considerable time. Regardless of any delay in the obtaining of an export or import license or certificate or denial of a license's or certificate's issuance, purchased lots shall be paid for in accordance with the Conditions of Sale, and any such delay or denial shall not serve as the basis for cancellation of any sale.** Prospective buyers are advised to obtain information from the relevant regulatory authorities regarding export and import restrictions, requirements, and costs prior to bidding.

Prospective buyers should also check with their local (e.g. state) regulatory authorities regarding any local restrictions and/or permit requirements that may apply with respect to purchases of regulated species materials, including without limitation purchases of items containing elephant ivory or rhino horn. For example, we are advised that New York buyers of any lot containing elephant or mammoth ivory or rhino horn will be responsible for obtaining a New York State permit before taking possession of the lot within New York State, and that the State of New Jersey has banned the import of items containing elephant or marine mammal ivory or rhino horn into that state.

Upon request, Bonhams can refer the purchaser to a third party agent to assist the purchaser in attempting to obtain the appropriate licenses and/or certificates. However, there is no assurance that any necessary licenses or certificates can be obtained. Please contact the Specialist Department for a suggested list of shipping agents prior to placing a bid if you are uncertain as to whether a lot is subject to export/import license or certificate requirements or related restrictions.

### WATCHES

Although we endeavor to mention in our descriptions significant defects, needed repairs, absent stones and the like, **WE DO NOT GUARANTEE THAT THE DESCRIPTIONS ARE COMPREHENSIVE.** Please examine all watches carefully. It is the responsibility of the prospective bidder, or his agent, to determine the condition of watches during the preview. Except as expressly set forth in the Conditions of Sale, all watches are sold "as is". We do not guarantee the accuracy or operation of any watch function such as timekeeping, chronograph, calendar, repeater or register.

We make no judgments as to whether diamond dials or diamond bezels originated at the factory or are later additions.

# Bonhams Specialist Departments

---

## **19th Century Paintings**

London  
Charles O' Brien  
+44 20 7468 8360  
New York  
Madalina Lazen  
+1 212 644 9108

## **20th Century British Art**

London  
Matthew Bradbury  
+44 20 7468 8295

## **20th Century Fine Art**

San Francisco  
Sonja Moro  
+1 415 503 3412

## **Aboriginal Art**

Australia  
Francesca Cavazzini  
+61 2 8412 2222

## **African, Oceanic & Pre-Columbian Art**

Los Angeles  
Fredric W. Backlar  
+1 323 436 5416 •

## **American Paintings**

New York  
Jennifer Jacobsen  
+1 917 206 1699

## **Antiquities**

London  
Francesca Hickin  
+44 20 7468 8226

## **Antique Arms & Armour**

London  
David Williams  
+44 20 7393 3807

## **Art Collections, Estates & Valuations**

London  
Harvey Cammell  
+44 (0) 20 7468 8340  
New York  
Sherri Cohen  
+1 917 206 1671  
Los Angeles  
Leslie Wright  
+1 323 436 5408  
Joseph Francaviglia  
+1 323 436 5443  
Lydia Ganley  
+1 323 436 4496  
San Francisco  
Victoria Richardson  
+1 415 503 3207  
Celeste Smith  
+1 415 503 3214

## **Australian Art**

Australia  
Merryn Schriever  
+61 2 8412 2222  
Alex Clark  
+61 3 8640 4088

## **Australian Colonial Furniture and Australiana**

+61 2 8412 2222

## **Books, Maps & Manuscripts**

London  
Matthew Haley  
+44 20 7393 3817  
New York  
Ian Ehling  
+1 212 644 9094  
Darren Sutherland  
+1 212 461 6531  
Los Angeles  
Catherine Williamson  
+1 323 436 5442  
San Francisco  
Adam Stackhouse  
+1 415 503 3266

## **British & European Glass**

London  
John Sandon  
+44 20 7468 8244

## **British Ceramics**

London  
John Sandon  
+44 20 7468 8244

## **California & Western Paintings & Sculpture**

Los Angeles  
Scot Levitt  
+1 323 436 5425  
Kathy Wong  
+1 323 436 5415  
San Francisco  
Aaron Bastian  
+1 415 503 3241

## **Carpets**

London  
Helena Gumley-Mason  
+44 20 8393 2615

## **Chinese & Asian Art**

London  
Asaph Hyman  
+44 20 7468 5888  
Rosangela Assennato  
+44 20 7393 3883  
Edinburgh  
Ian Glennie  
+44 131 240 2299  
New York  
Bruce MacLaren  
+1 917 206 1677  
Los Angeles  
Rachel Du  
+1 323 436 5587  
San Francisco  
Dessa Goddard  
+1 415 503 3333  
Hong Kong  
Xibo Wang  
+852 3607 0010  
Sydney  
Yvett Klein  
+61 2 8412 2231

## **Chinese Paintings**

Hong Kong  
Iris Miao,  
+852 3607 0011

## **Clocks**

London  
James Stratton  
+44 20 7468 8364  
New York  
Jonathan Snellenburg  
+1 212 461 6530

## **Coins & Medals**

London  
John Millensted  
+44 20 7393 3914  
Los Angeles  
Paul Song  
+1 323 436 5455

## **Entertainment Memorabilia**

London  
Katherine Schofield  
+44 20 7393 3871  
Los Angeles  
Catherine Williamson  
+1 323 436 5442  
Dana Hawkes  
+1 978 283 1518

## **European Ceramics**

London  
Sebastian Kuhn  
+44 20 7468 8384

## **European Paintings**

London  
Charles O' Brien  
+44 20 7468 8360  
New York  
Madalina Lazen  
+1 212 644 9108  
Los Angeles  
Mark Fisher  
+1 323 436 5488  
Rocco Rich  
+1 323 436 5410

## **European Sculptures & Works of Art**

London  
Michael Lake  
+44 20 8963 6813

## **Furniture and Decorative Art**

London  
Thomas Moore  
+44 20 8963 2816  
Los Angeles  
Angela Past  
+1 323 436 5422  
Anna Hicks  
+1 323 436 5463

## **Greek Art**

London  
Anastasia Orfanidou  
+44 20 7468 8356

## **Golf Sporting Memorabilia**

Edinburgh  
Kevin McGimpsey  
+44 131 240 2296  
Hamish Wilson  
+44 131 240 0916

## **Irish Art**

London  
Penny Day  
+44 20 7468 8366

## **Impressionist & Modern Art**

London  
India Phillips  
+44 20 7468 8328  
New York  
Caitlyn Pickens  
+1 212 644 9135  
Los Angeles  
Kathy Wong  
+1 323 436 5415

## **Indian, Himalayan & Southeast Asian Art**

New York  
Mark Rasmussen  
+1 917 206 1688  
Hong Kong  
Edward Wilkinson  
+852 2918 4321

## **Islamic & Indian Art**

London  
Oliver White  
+44 20 7468 8303

## **Japanese Art**

London  
Suzannah Yip  
+44 20 7468 8368  
New York  
Jeff Olson  
+1 212 461 6516

## **Jewellery**

London  
Jean Ghika  
+44 20 7468 8282  
Emily Barber  
+44 20 7468 8284  
New York  
Brett O'Connor  
+1 212 461 6525  
Caroline Morrissey  
+1 212 644 9046  
Camille Barbier  
+1 212 644 9035  
Los Angeles  
Dana Ehrman  
+1 323 436 5407  
Emily Waterfall  
+1 323 436 5426  
San Francisco  
Shannon Beck  
+1 415 503 3306  
Hong Kong  
Paul Redmayne  
+852 3607 0006

## **Marine Art**

London  
Veronique Scorer  
+44 20 7393 3962

**Mechanical Music  
London**

Jon Baddeley  
+44 20 7393 3872

**Modern & Contemporary  
African Art**

**London**  
Giles Peppiatt  
+ 44 20 7468 8355

**New York**  
Hayley Grundy  
+1 917 206 1624

**Modern & Contemporary  
Middle Eastern Art**

**London**  
Nima Sagharchi  
+44 20 7468 8342

**Modern & Contemporary  
South Asian Art**

**London**  
Tahmina Ghaffar  
+44 207 468 8382

**Modern Decorative  
Art + Design**

**London**  
Mark Oliver  
+44 20 7393 3856

**New York**  
Benjamin Walker  
+1 212 710 1306  
Dan Tolson  
+1 917 206 1611

**Los Angeles**  
Jason Stein  
+1 323 436 5466

**Motor Cars  
London**

Tim Schofield  
+44 20 7468 5804

**New York**  
Rupert Banner  
+1 212 461 6515

Eric Minoff  
+1 917 206 1630  
Evan Ide  
+1 917 340 4657

**Los Angeles**  
Jakob Greisen  
+1 415 503 3284

Michael Caimano  
+1 929 666 2243

**San Francisco**  
Mark Osborne  
+1 415 503 3353

**Europe**  
Philip Kantor  
+32 476 879 471

**Automobilia  
London**

Toby Wilson  
+44 20 8963 2842  
Adrian Pipiros  
+44 20 8963 2840

**Motorcycles  
London**

Ben Walker  
+44 20 8963 2819  
James Stensel  
+44 20 8963 2818

**Los Angeles**  
Craig Mallery  
+1 323 436 5470

**Museum Services  
San Francisco**

Laura King Pfaff  
+1 415 503 3210

**Native American Art  
San Francisco**

Ingmars Lindbergs  
+1 415 503 3393

**Natural History  
Los Angeles**

Claudia Florian  
+1 323 436 5437  
+1 310 469 8567 •  
Thomas E. Lindgren  
+1 310 469 8567 •

**Old Master Pictures  
London**

Andrew Mckenzie  
+44 20 7468 8261

**Los Angeles**  
Mark Fisher  
+1 323 436 5488

**Orientalist Art  
London**

Charles O'Brien  
+44 20 7468 8360

**Photography  
New York**

Laura Paterson  
+1 917 206 1653  
**Los Angeles & San Francisco**  
Morisa Rosenberg  
+1 323 436 5435  
+1 415 503 3259

**Post-War and  
Contemporary Art**

**London**  
Ralph Taylor  
+44 20 7447 7403

**New York**  
Muys Sniijders,  
+ 212 644 9020

Jeremy Goldsmith,  
+ 1 917 206 1656  
Jacqueline Towers-Perkins,  
+1 212 644 9039

Lisa De Simone,  
+1 917 206 1607

**Los Angeles**  
Sharon Squires  
+1 323 436 5404

Laura Bjorstad  
+1 323 436 5446

**Prints and Multiples  
London**

Lucia Tro Santafe  
+44 20 7468 8262

**New York**  
Deborah Ripley  
+1 212 644 9059

**Los Angeles**  
Morisa Rosenberg  
+1 323 447 9374

**Russian Art  
London**

Daria Khristova  
+44 20 7468 8334

**New York**  
Yelena Harbick  
+1 212 644 9136

**Scientific Instruments  
London**

Jon Baddeley  
+44 20 7393 3872

**New York**  
Jonathan Snellenburg  
+1 212 461 6530

**Scottish Pictures  
Edinburgh**

Chris Brickley  
+44 131 240 2297

**Silver & Gold Boxes  
London**

Ellis Finch  
+44 20 7393 3973

**Sporting Guns  
London**

Patrick Hawes  
+44 20 7393 3815

**Space History  
San Francisco**

Adam Stackhouse  
+1 415 503 3266

**Travel Pictures  
London**

Veronique Scorer  
+44 20 7393 3962

**Watches &  
Wristwatches**

**London**  
Jonathan Darracott  
+44 20 7447 7412

**New York**  
Jonathan Snellenburg  
+1 212 461 6530

**Hong Kong**  
Tim Bourne  
+852 3607 0021

**Whisky**

**Edinburgh**  
Martin Green  
+44 131 225 2266

**Hong Kong**  
Daniel Lam  
+852 2918 4321

**Wine**

**London**  
Richard Harvey  
+44 20 7468 5811

**San Francisco**  
Christine Ballard  
+1 415 503 3221

**Hong Kong**  
Daniel Lam  
+852 2918 4321

**Client Services Departments**

**U.S.A.**

**San Francisco**

(415) 861 7500  
(415) 861 8951 fax  
Monday - Friday, 9am to 5pm

**Los Angeles**

(323) 850 7500  
(323) 850 6090 fax  
Monday - Friday, 9am to 5pm

**New York**

(212) 644 9001  
(212) 644 9009 fax  
Monday - Friday, 9am to 5pm

**Toll Free**

(800) 223 2854

**U.K.**

Monday to Friday 8.30 to 6.00  
+44 (0) 20 7447 7447

**Bids**

+44 (0) 20 7447 7447  
+44 (0) 20 7447 7401 fax  
To bid via the internet please  
visit [bonhams.com](http://bonhams.com)

• Indicates independent contractor

# Bonhams Global Network

---

## International Salerooms

**London**  
101 New Bond Street  
London W1S 1SR  
+44 20 7447 7447  
+44 20 7447 7400 fax

**New York**  
580 Madison Avenue  
New York, NY  
10022  
+1 (212) 644 9001  
+1 (212) 644 9007 fax

**Hong Kong**  
Suite 2001  
One Pacific Place  
88 Queensway  
Admiralty  
Hong Kong  
+852 2918 4321  
+852 2918 4320 fax

**London**  
Montpelier Street London  
SW7 1HH  
+44 20 7393 3900  
+44 20 7393 3905 fax

---

## Offices and Associated Companies

### AFRICA

**Nigeria**  
Neil Coventry  
+234 (0)8110 033 792  
+27 (0)7611 20171  
neil.coventry@bonhams.com

**South Africa - Johannesburg**  
Penny Culverwell  
+27 (0)71 342 2670  
penny.culverwell@bonhams.com

### AUSTRALIA

**Sydney**  
97-99 Queen Street,  
Woollahra, NSW 2025  
Australia  
+61 (0) 2 8412 2222  
+61 (0) 2 9475 4110 fax  
info.aus@bonhams.com

**Melbourne**  
Como House  
Como Avenue  
South Yarra  
Melbourne VIC 3141  
Australia  
+61 (0) 3 8640 4088  
+61 (0) 2 9475 4110 fax  
info.aus@bonhams.com

### ASIA

**Beijing**  
Jessica Zhang  
Unit S102A, Beijing  
Lufthansa Center,  
50 Liangmaqiao Road,  
Chaoyang District,  
Beijing 100125, China  
+86 (0) 10 8424 3188  
beijing@bonhams.com

**Singapore**  
Bernadette Rankine  
11th Floor, Wisma Atria  
435 Orchard Road  
Singapore 238877  
+65 (0) 6701 8038  
+65 (0) 6701 8001 fax  
bernadette.rankine@bonhams.com

**Taiwan**  
37th Floor, Taipei 101  
Tower  
No. 7 Xinyi Road,  
Section 5  
Taipei, 100  
+886 2 8758 2898  
+886 2 8758 2897 fax  
taiwan@bonhams.com

### EUROPE

**Austria**  
Thomas Kamm  
+49 (0) 89 2420 5812  
austria@bonhams.com

**Belgium**  
Boulevard  
Saint-Michel 101  
1040 Brussels  
+32 (0) 2 736 5076  
belgium@bonhams.com

**France**  
4 rue de la Paix  
75002 Paris  
+33 (0) 1 42 61 10 10  
paris@bonhams.com

**Germany - Cologne**  
Katharina Schmid  
+49 (0) 221 9865 3419  
+49 (0) 157 9234 6717  
cologne@bonhams.com

**Germany - Hamburg**  
Marie Becker Lingenthal  
+49 (0) 17 4236 0022  
hamburg@bonhams.com

**Germany - Munich**  
Maximilianstrasse 52  
80538 Munich  
+49 (0) 89 2420 5812  
munich@bonhams.com

**Germany - Stuttgart**  
Neue Brücke 2  
New Bridge Offices  
70173 Stuttgart  
+49 (0) 711 2195 2640  
+49 (0) 157 9234 6717  
stuttgart@bonhams.com

**Greece**  
7 Neofytou Vamva  
Street  
Athens 10674  
+30 (0) 210 3636 404  
athens@bonhams.com

**Ireland**  
31 Molesworth Street  
Dublin 2  
+353 (0) 1 602 0990  
ireland@bonhams.com

**Italy - Milan**  
Via Boccaccio 22  
20123 Milano  
+39 0 2 4953 9020  
milan@bonhams.com

**Italy - Rome**  
Via Sicilia 50  
00187 Roma  
+39 06 485 900  
rome@bonhams.com

**The Netherlands**  
De Lairessestraat 154  
1075 HL Amsterdam  
+31 (0) 20 67 09 701  
amsterdam@bonhams.com

**Portugal**  
Rua Bartolomeu Dias  
nº160. 1º  
Belem  
1400-031 Lisbon  
+351 218 293 291  
portugal@bonhams.com

**Spain - Barcelona**  
Teresa Ybarra  
+34 930 156 686  
+34 680 347 606  
barcelona@bonhams.com

**Spain - Madrid**  
Núñez de Balboa no  
4-1C  
28001 Madrid  
+34 915 78 17 27  
madrid@bonhams.com

**Switzerland - Geneva**  
Rue Etienne-Dumont 10  
1204 Geneva  
+41 (0) 22 300 3160  
geneva@bonhams.com

**Switzerland - Zurich**  
Andrea Bodmer  
Dreikönigstrasse 31a  
8002 Zürich  
+41 44 281 9535  
zurich@bonhams.com

### NORTH AMERICA

**USA**  
Representatives:  
**Arizona**  
Terri Adrian-Hardy  
+1 (602) 859 1843  
arizona@bonhams.com

**California Central Valley**  
David Daniel  
+1 (916) 364 1645  
sacramento@bonhams.com

**California Palm Springs**  
Brooke Sivo  
+1 (760) 350 4255  
palmsprings@bonhams.com

**California San Diego**  
Brooke Sivo  
+1 (760) 567 1744  
sandiego@bonhams.com

**Colorado**  
Lance Vigil  
+1 (720) 355 3737  
colorado@bonhams.com

**Florida**  
April Matteini  
+1 (305) 978 2459  
miami@bonhams.com  
Alexis Butler  
+1 (305) 878 5366  
miami@bonhams.com

**Georgia**  
Mary Moore Bethea  
+1 (404) 842 1500  
georgia@bonhams.com

**Illinois & Midwest**  
Natalie B. Waechter  
+1 (773) 267 3300  
Shawn Marsh  
+1 (773) 680 2881  
chicago@bonhams.com



---

**Edinburgh**

22 Queen Street  
Edinburgh  
EH2 1JX  
+44 131 225 2266  
+44 131 220 2547 fax

**Los Angeles**

7601 W. Sunset Boulevard  
Los Angeles  
CA 90046  
+1 (323) 850 7500  
+1 (323) 850 6090 fax

**San Francisco**

220 San Bruno Avenue  
San Francisco  
CA 94103  
+1 (415) 861 7500  
+1 (415) 861 8951 fax

---

**UNITED KINGDOM****Massachusetts**

Amy Corcoran  
+1 (617) 742 0909  
boston@bonhams.com

**Nevada**

David Daniel  
+1 (775) 831 0330  
nevada@bonhams.com

**New Mexico**

Terri Adrian-Hardy  
+1 (602) 859 1843  
newmexico@bonhams.com

**Oregon**

Sheryl Acheson  
+1 (971) 727 7797  
oregon@bonhams.com

**Texas – Dallas**

Mary Holm  
+1 (214) 557 2716  
dallas@bonhams.com

**Texas – Houston**

Lindsay Davis  
+1 (713) 855 7452  
texas@bonhams.com

**Virginia**

Gertraud Hechl  
+1 (202) 422 2733  
virginia@bonhams.com

**Washington**

Heather O'Mahony  
+1 (206) 566 3913  
seattle@bonhams.com

**Washington DC  
Mid-Atlantic Region**

Gertraud Hechl  
+1 (202) 422 2733  
washingtonDC@bonhams.com

**Canada****Toronto, Ontario**

Kristin Kearney  
340 King St East  
2nd Floor, Office 213  
Toronto ON  
M5A 1K8  
+1 (416) 462 9004  
info.ca@bonhams.com

**Montreal, Quebec**

+1 (514) 209 2377  
info.ca@bonhams.com

**MIDDLE EAST****Israel**

Joslyne Halibard  
+972 (0)54 553 5337  
joslyne.halibard@bonhams.com

**SOUTH AMERICA****Brazil**

+55 11 3031 4444  
+55 11 3031 4444  
fax

**South East  
England****Guildford**

Millmead,  
Guildford,  
Surrey GU2 4BE  
+44 1483 504 030  
+44 1483 450 205  
fax

**Isle of Wight**

+44 1273 220 000

**Representative:  
Brighton & Hove**

Tim Squire-Sanders  
+44 1273 220 000

**West Sussex**

+44 (0) 1273 220 000

**South West  
England****Bath**

Queen Square House  
Charlotte Street  
Bath BA1 2LL  
+44 1225 788 988  
+44 1225 446 675  
fax

**Cornwall – Truro**

36 Lemon Street  
Truro  
Cornwall  
TR1 2NR  
+44 1872 250 170  
+44 1872 250 179  
fax

**Exeter**

The Lodge  
Southernhay West  
Exeter, Devon  
EX1 1JG  
+44 1392 425 264  
+44 1392 494 561  
fax

**Tetbury**

Eight Bells House  
14 Church Street  
Tetbury  
Gloucestershire  
GL8 8JG  
+44 1666 502 200  
+44 1666 505 107  
fax

**Representatives:****Dorset**

Matthew Lacey  
+44 1935 815 271

**East Anglia and  
Bury St. Edmunds**

Michael Steel  
+44 1284 716 190

**Norfolk**

The Market Place  
Reepham  
Norfolk NR10 4JJ  
+44 1603 871 443  
+44 1603 872 973  
fax

**Midlands****Knowle**

The Old House  
Station Road  
Knowle, Solihull  
West Midlands  
B93 0HT  
+44 1564 776 151  
+44 1564 778 069  
fax

**Oxford**

Banbury Road  
Shipton on Cherwell  
Kidlington OX5 1JH  
+44 1865 853 640  
+44 1865 372 722  
fax

**Yorkshire & North  
East England****Leeds**

The West Wing  
Bowcliffe Hall  
Bramham  
Leeds  
LS23 6LP  
+44 113 234 5755  
+44 113 244 3910  
fax

**North West England****Chester**

2 St Johns Court,  
Vicars Lane,  
Chester,  
CH1 1QE  
+44 1244 313 936  
+44 1244 340 028  
fax

**Manchester**

The Stables  
213 Ashley Road  
Hale WA15 9TB  
+44 161 927 3822  
+44 161 927 3824  
fax

**Channel Islands****Jersey**

La Chasse  
La Rue de la Vallee  
St Mary  
Jersey JE3 3DL  
+44 1534 722 441  
+44 1534 759 354  
fax

**Representative:****Guernsey**

+44 1481 722 448

**Scotland****Bonhams West  
of Scotland**

Kirkhill House  
Broom Road East  
Newton Mearns  
Glasgow  
G77 5LL  
+44 141 223 8866

**Wales****Representatives:****Cardiff**

Jeff Muse  
+44 2920 727 980

# Auction Registration Form

(Attendee / Absentee / Online / Telephone Bidding)

Please circle your bidding method above.

--	--	--	--

**Paddle number (for office use only)**

**General Notice:** This sale will be conducted in accordance with Bonhams Conditions of Sale, and your bidding and buying at the sale will be governed by such terms and conditions. Please read the Conditions of Sale in conjunction with the Buyer's Guide relating to this sale and other published notices and terms relating to bidding. Payment by personal or business check may result in your property not being released until purchase funds clear our bank. Checks must be drawn on a U.S. bank.

**Notice to Absentee Bidders:** In the table below, please provide details of the lots on which you wish to place bids at least 24 hours prior to the sale. Bids will be rounded down to the nearest increment. Please refer to the Buyer's Guide in the catalog for further information relating to instructions to Bonhams to execute absentee bids on your behalf. Bonhams will endeavor to execute bids on your behalf but will not be liable for any errors or non-executed bids.

**Notice to First Time Bidders:** New clients are requested to provide photographic proof of ID - passport, driving license, ID card, together with proof of address - utility bill, bank or credit card statement etc. Corporate clients should also provide a copy of their articles of association / company registration documents, together with a letter authorizing the individual to bid on the company's behalf. Failure to provide this may result in your bids not being processed. For higher value lots you may also be asked to provide a bankers reference.

**Notice to online bidders;** If you have forgotten your username and password for [www.bonhams.com](http://www.bonhams.com), please contact Client Services.

**If successful**

- I will collect the purchases myself
- Please contact me with a shipping quote (if applicable)
- I will arrange a third party to collect my purchase(s)

**Please email or fax the completed Registration Form and requested information to:**

Bonhams Client Services Department  
580 Madison Avenue  
New York, New York 10022  
Tel +1 (212) 644 9001  
Fax +1 (212) 644 9009  
bids.us@bonhams.com

# Bonhams

Sale title: New York Jewels		Sale date: Wednesday May 1, 2019	
Sale no. 25451		Sale venue: New York	
<b>General Bid Increments:</b>			
\$10 - 200 .....by 10s		\$10,000 - 20,000 .....by 1,000s	
\$200 - 500 .....by 20 / 50 / 80s		\$20,000 - 50,000 .....by 2,000 / 5,000 / 8,000s	
\$500 - 1,000 .....by 50s		\$50,000 - 100,000 .....by 5,000s	
\$1,000 - 2,000 .....by 100s		\$100,000 - 200,000 .....by 10,000s	
\$2,000 - 5,000 .....by 200 / 500 / 800s		above \$200,000 .....at the auctioneer's discretion	
\$5,000 - 10,000 .....by 500s		The auctioneer has discretion to split any bid at any time.	
Customer Number		Title	
First Name		Last Name	
Company name (to be invoiced if applicable)			
Address			
City		County / State	
Post / Zip code		Country	
Telephone mobile		Telephone daytime	
Telephone evening		Fax	
Telephone bidders: indicate primary and secondary contact numbers by writing ① or ② next to the telephone number.			
E-mail (in capitals) _____			
By providing your email address above, you authorize Bonhams to send you marketing materials and news concerning Bonhams and partner organizations. Bonhams does not sell or trade email addresses.			
I am registering to bid as a private client <input type="checkbox"/>		I am registering to bid as a trade client <input type="checkbox"/>	
Resale: please enter your resale license number here _____ We may contact you for additional information.			

SHIPPING	
Shipping Address (if different than above):	
Address: _____	Country: _____
City: _____	Post/ZIP code: _____

**Please note that all telephone calls are recorded.**

Type of bid (A-Absentee, T-Telephone)	Lot no.	Brief description (In the event of any discrepancy, lot number and not lot description will govern.) If you are bidding online there is no need to complete this section.	MAX bid in US\$ (excluding premium and applicable tax) Emergency bid for telephone bidders only*

**You instruct us to execute each absentee bid up to the corresponding bid amount indicated above.**

\* Emergency Bid: A maximum bid (exclusive of Buyer's Premium and tax) to be executed by Bonhams **only** if we are unable to contact you by telephone or should the connection be lost during bidding.

BY SIGNING THIS FORM YOU AGREE THAT YOU HAVE READ AND UNDERSTAND OUR CONDITIONS OF SALE AND SHALL BE LEGALLY BOUND BY THEM, AND YOU AGREE TO PAY THE BUYER'S PREMIUM, ANY APPLICABLE TAXES, AND ANY OTHER CHARGES MENTIONED IN THE BUYER'S GUIDE OR CONDITIONS OF SALE. THIS AFFECTS YOUR LEGAL RIGHTS.	
Your signature: _____	Date: _____





**Bonhams**  
580 Madison Avenue  
New York, New York 10022

---

+1 (212) 644 9001  
bonhams.com

**AUCTIONEERS SINCE 1793**